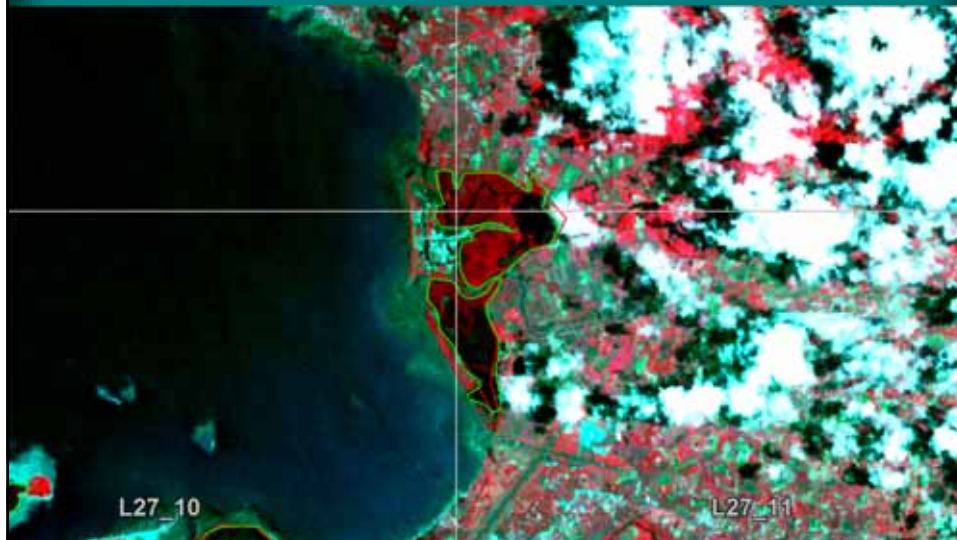
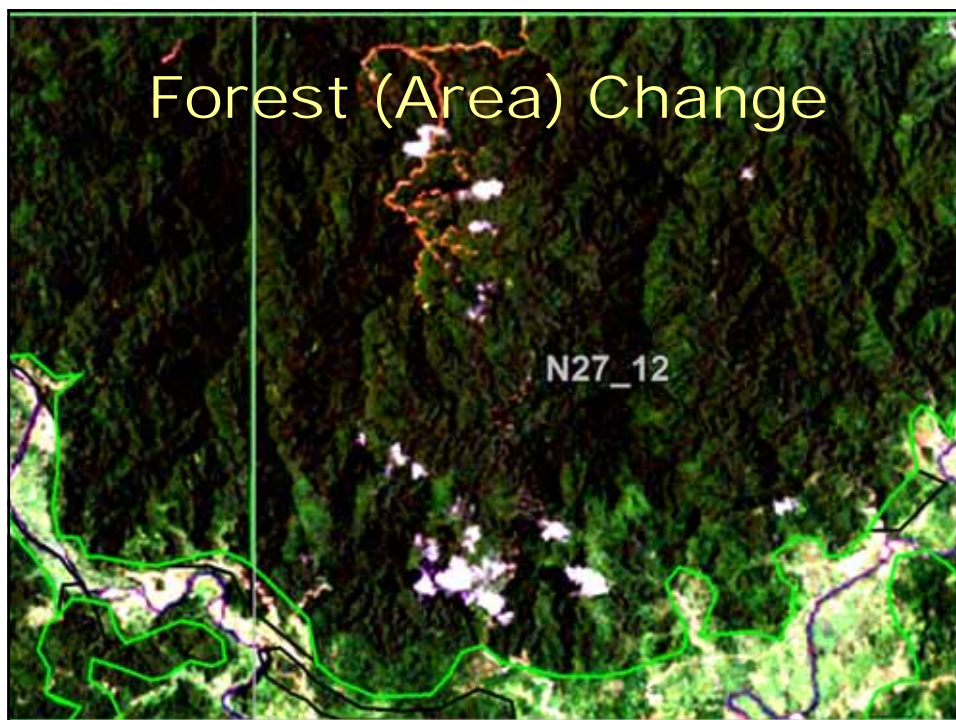


Forest Degradation

Discussion Session 19.11.15

Deforestation





Problem

- Canopy cover looks like unlogged forest
- Removal of carbon stock takes place
- Logging roads are only visible for about 3 months

Possible Investigation

- Mapping of secondary vegetation (i) climber, (ii) African tulip, (iii) tree ferns
- Mapping of logging tracks within time window Sentinel 2
- Mapping of logging tracks within time window Sentinel 1
- LiDAR on UAV (punctual)