

IMPORTANCE OF HYDROGRAPHIC SURVEYS IN SI ECONOMIC DEVELOPMENT AND MARITIME SAFETY

By Clifford Olisukulu
Solomon Islands Hydrographic Unit

Scope of the presentation:

- 1. Background;
- 2. Importance of the Hydrographic Unit;
- 3. Funding;
- 4. Surveys done;
- 5. Future development of the Hydrographic Unit; and
- 6. Other Information

1. BACKGROUND

HYDROGRAPHIC UNIT FOR SOLOMON ISLANDS

The Solomon Islands Hydrographic Unit was established back in the late 60's. Due to Change in Government and the ethnic tension in 2000 the Unit was closed and all hydrographic data records were destroyed.

Following an Act of Parliament in April 2009 to reform the old Marine Department to become the Solomon Islands Maritime Safety Administration, Solomon Islands Government, Hydrographic Unit was re-established in early 2012.

The Hydrographic Unit started off:-

- Recruiting 4 full time staff;
- Ordered portable hydrographic surveying equipment in the 4th Quarter, 2012 and 1st Quarter 2013, to restore the Unit's operational capability;
- Re-sourcing important data and records from SOPAC, LINZ, UKHO and the AHS to re-build the Units data records/base; and
- In operation by 2nd Quarter of 2013.

2. IMPORTANCE OF ESTABLISHING SI HYDROGRAPHIC UNIT

- Act as the national agency for hydrography within Solomon Islands Government
- Discharge the nations responsibility under SOLAS (*SOLAS Chapter V Regulations 2, 4, 9, 19 and 27*)
- Carry out, as far as possible:-
 - Nautical and hydrographic services, in the manner most suitable for the purpose of aiding navigation;
 - Hydrographic survey is carried out, as far as possible, adequate to the requirements of safe navigation;
 - Prepare nautical charts, sailing directions, lists of lights, tide tables and other nautical publications, where applicable, satisfy needs of safe navigation.
 - Issue nautical charts;
 - Promulgate notices to mariners in order that nautical charts and publications are kept, as far as possible, up to date; and
 - Provide data management arrangements to support these services.
 - Further Readings – IHO Publication M-2 available on Website.

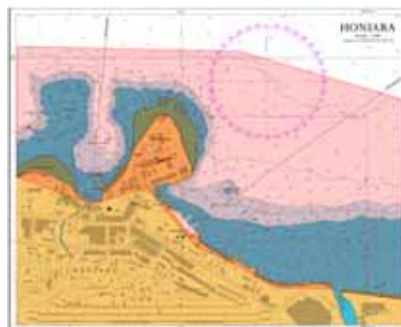
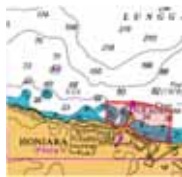
3. FUNDING

SIHU is fully supported/funded by the Government through its annual Development Budget and Recurrent Estimates. Major costs for the Unit are as follows:

- Purchase additional new equipment or equipment updates;
- Meet equipment maintenance and repairs locally and overseas;
- Meet daily activities and ongoing operations of the Unit; and
- Field survey programs

4. SURVEYS DONE AND LOCATIONS

1. HONIARA INTERNATIONAL PORT (HI TO S: 01/14)



2. CHOISEUL BAY – CHOISEUL PROVINCE (HI TO S: 01/15)



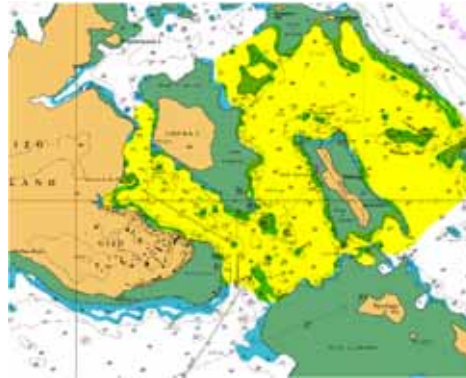
3. TULAGHI HARBOUR – CENTRAL ISLANDS PROVINCE (HI TO S: 572)

- TULAGHI HARBOUR



4. GIZO HARBOUR – WESTERN PROVINCE (HI TO S: 02/15)

- GIZO HARBOUR



5. FUTURE DEVELOPMENTS OF THE UNIT

- Redraft of the 1998 Shipping Act
- Redraft of Maritime Safety Administration Act of 2009
- SIMSA BECOMMING AN AUTONOMOUS MARITME AUTHORITY
- Acquire a portable multi-beam surveying system capability
- Acquire software for national chart production/ENC
- Establish a minimum GIS capability

6. OTHER INFORMATION

- SI is an Associate Member of the SWPHC.
- IHO Membership still pending awaiting endorsement from Member states of IHO.
- Australia to become new Primary Charting Authority for Solomon Islands.
- Trainings through IHO Capacity Building Program, Donor assistance.

THANK YOU ALL