

The slide features a background image of a coastal scene in the Solomon Islands. In the foreground, two children sit on a wooden structure. In the middle ground, a person is wading in the water, and another is in a small boat. The background shows a lush green coastline under a blue sky.

The Nature Conservancy
Protecting nature. Preserving life.

University of the Sunshine Coast

GIS meets Participatory 3D Modelling (P3DM): A case study from BoeBoe, Solomon Islands

Javier Leon
Lecturer in Physical Geography
School of Science and Engineering

Partners 19th November
"Establishing the Trust"
P.A.P.O. N.M. U.P.O.A.

University of Wollongong

Australian Government
AusAID

CTA

The slide features a background image of a coastal scene in the Solomon Islands. In the foreground, two children sit on a wooden structure. In the middle ground, a person is wading in the water, and another is in a small boat. The background shows a lush green coastline under a blue sky.

The Nature Conservancy
Protecting nature. Preserving life.

University of the Sunshine Coast

GIS meets Participatory 3D Modelling (P3DM): A case study from BoeBoe, Solomon Islands

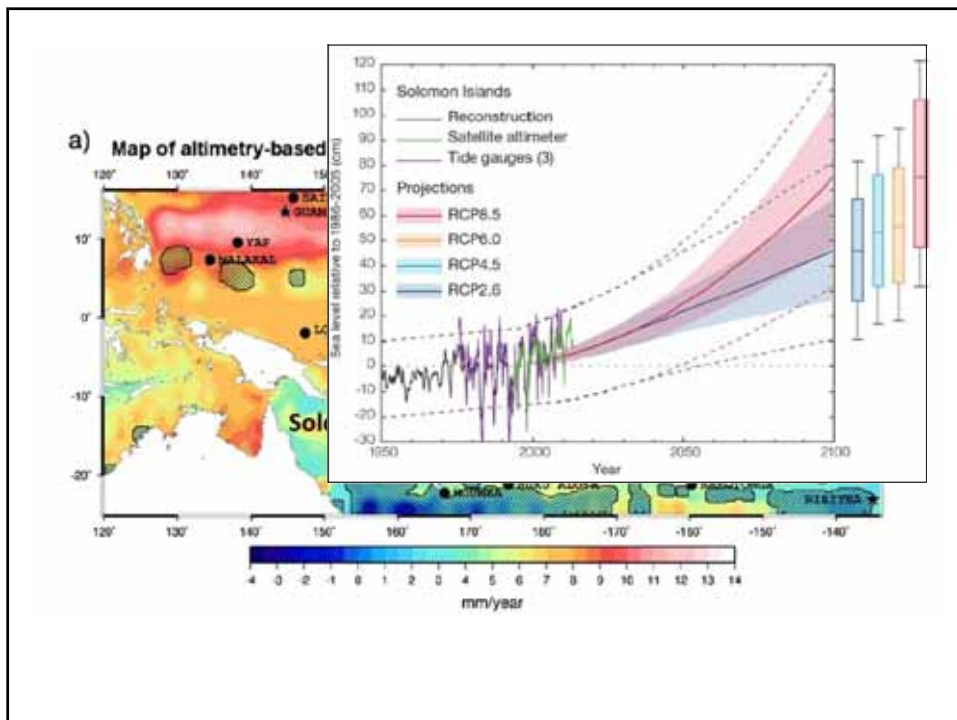
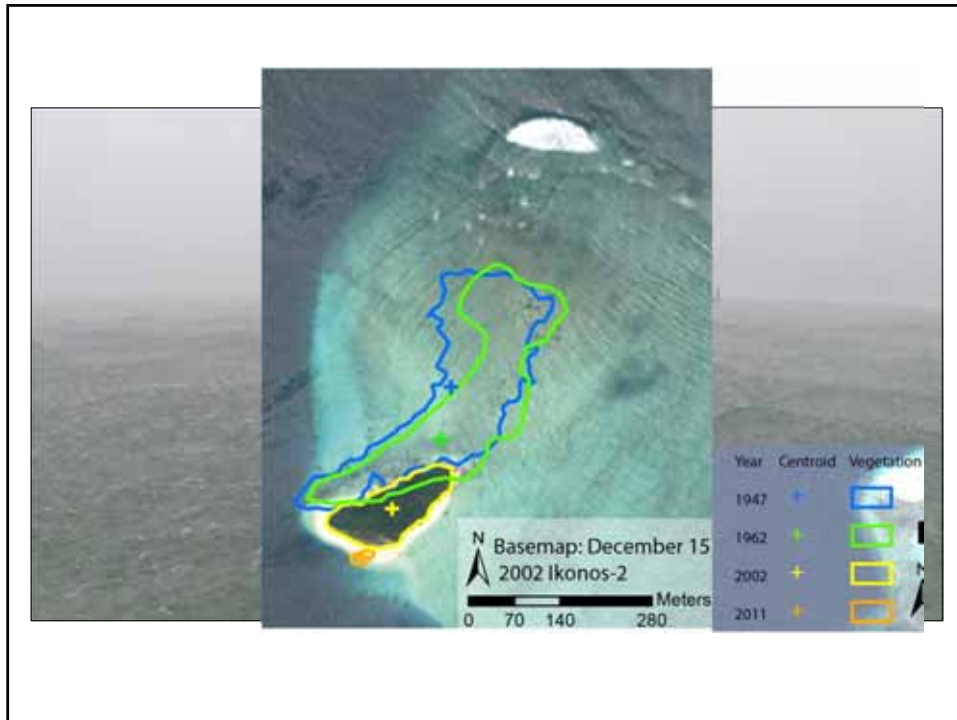
Javier Leon
(pronounced: [xa'βjɛr])

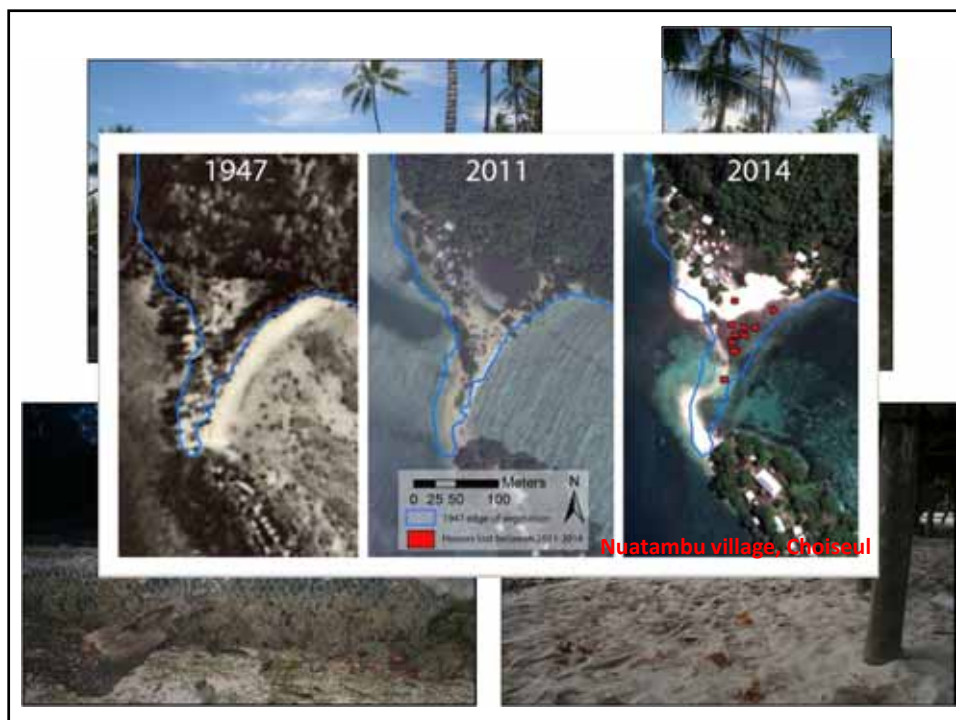
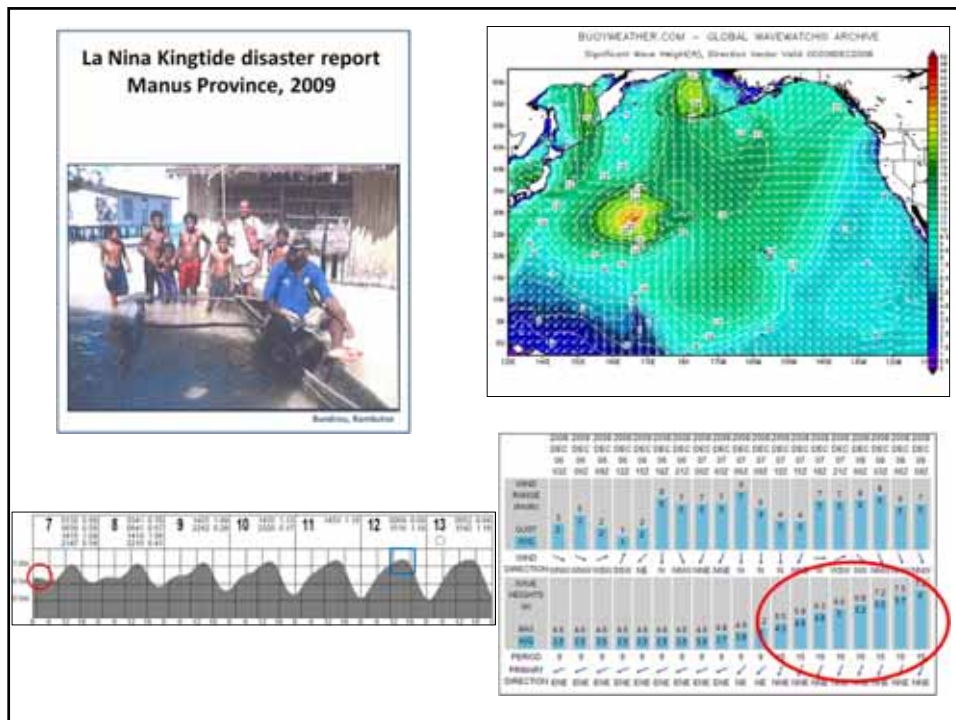
Partners 19th November
"Establishing the Trust"
P.A.P.O. N.M. U.P.O.A.

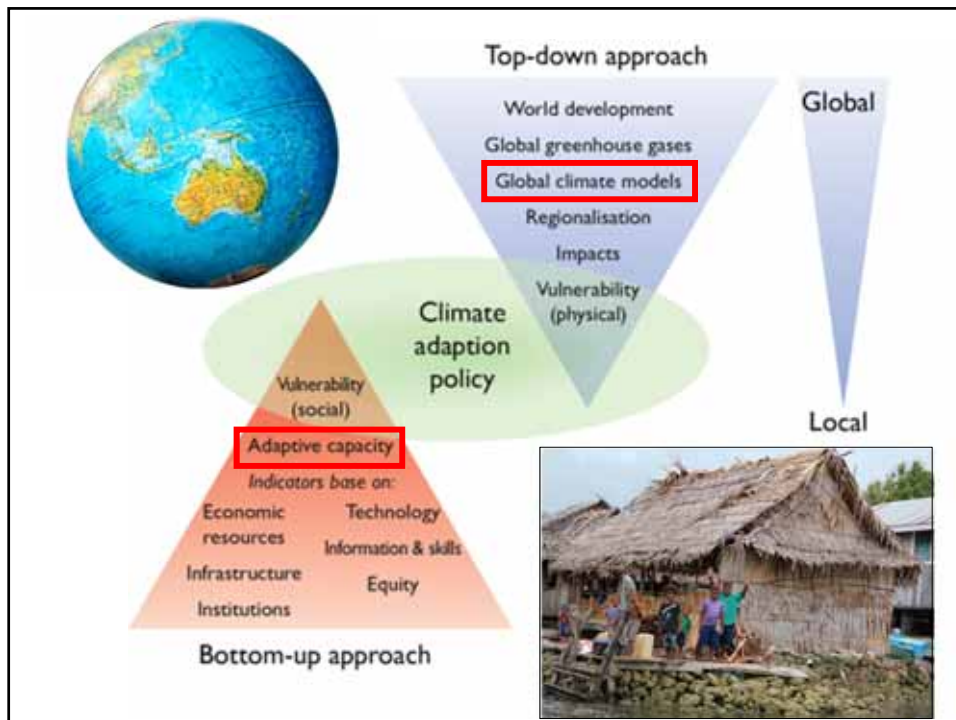
University of Wollongong

Australian Government
AusAID

CTA

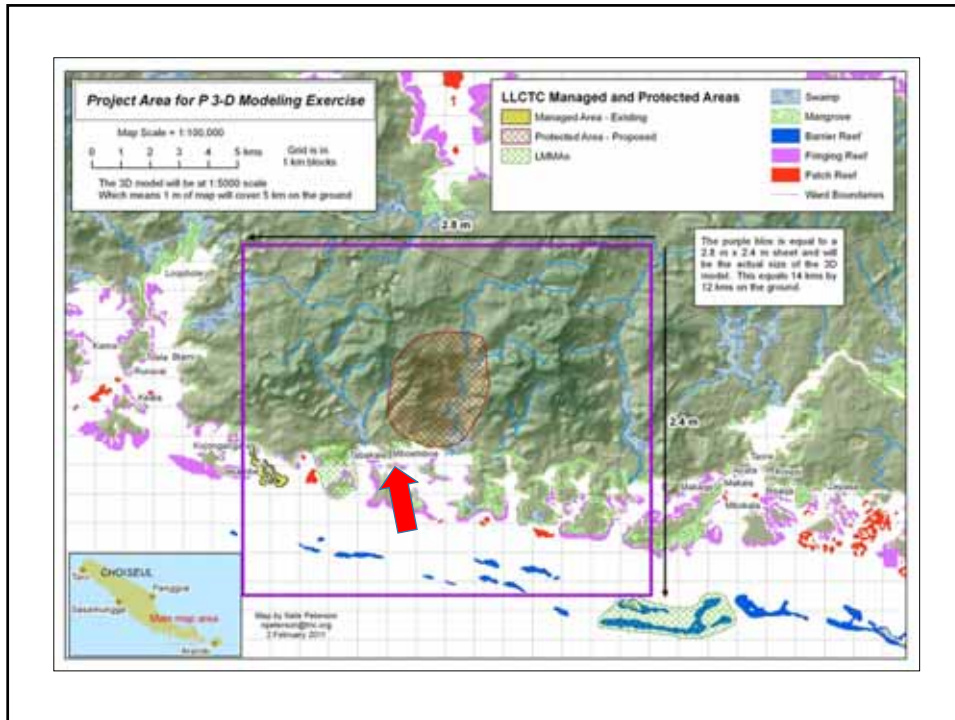


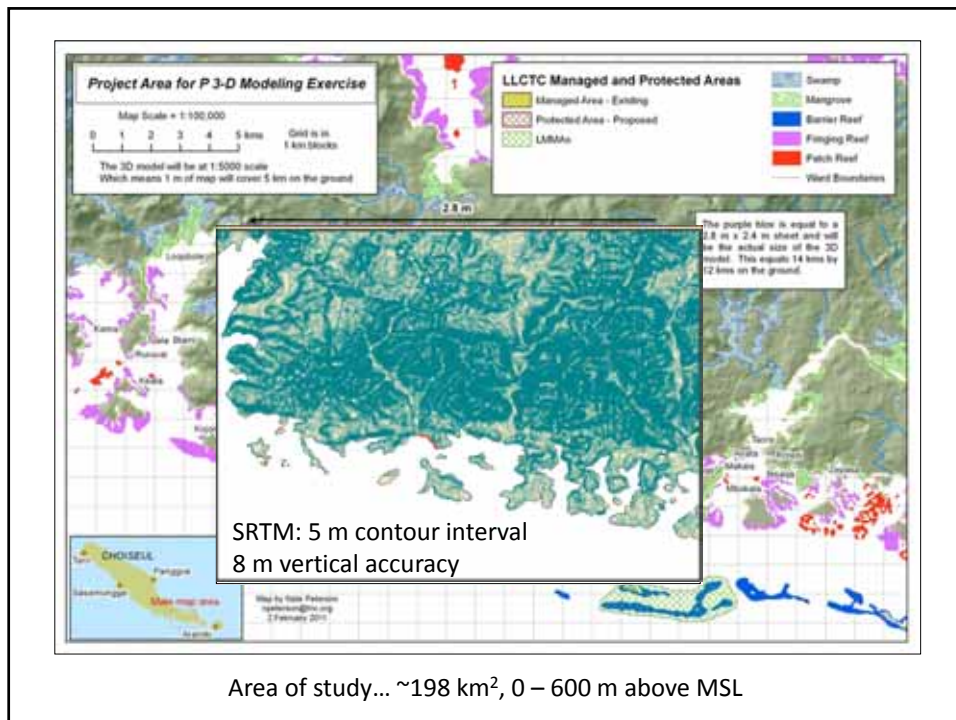




This block contains four images arranged in a 2x2 grid, connected by a large red double-headed arrow pointing vertically. The top-left image is a satellite view of a coastline with a river delta. The top-right image shows a white satellite dish on a stone base. The bottom-left image shows two men looking towards the camera. The bottom-right image shows a coastal scene with palm trees and people. Below the images is a text box with the following text:

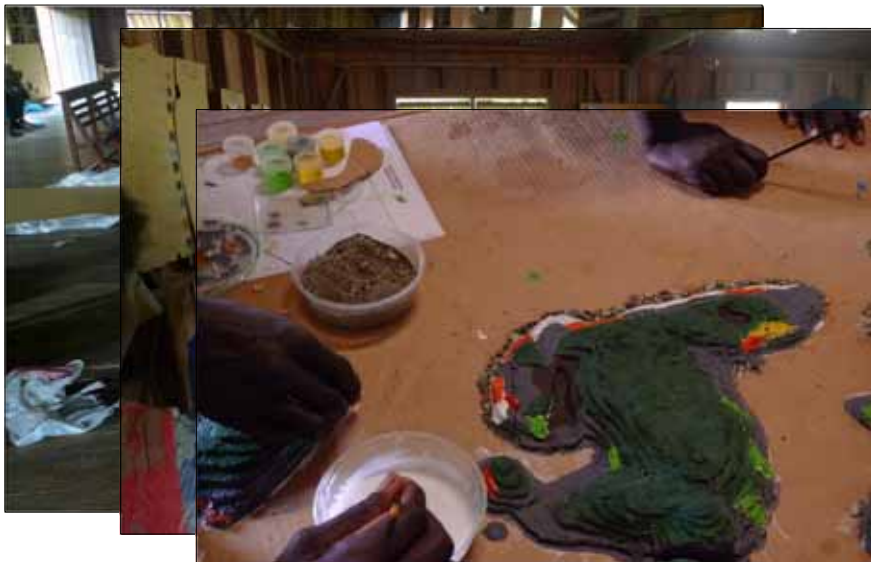
“Building the resilience of communities and their ecosystems to the impact of climate change in the Pacific (AusAid)” ... **integrated traditional and scientific knowledge of coastal hazards using participatory three-dimensional modelling (P3DM)**



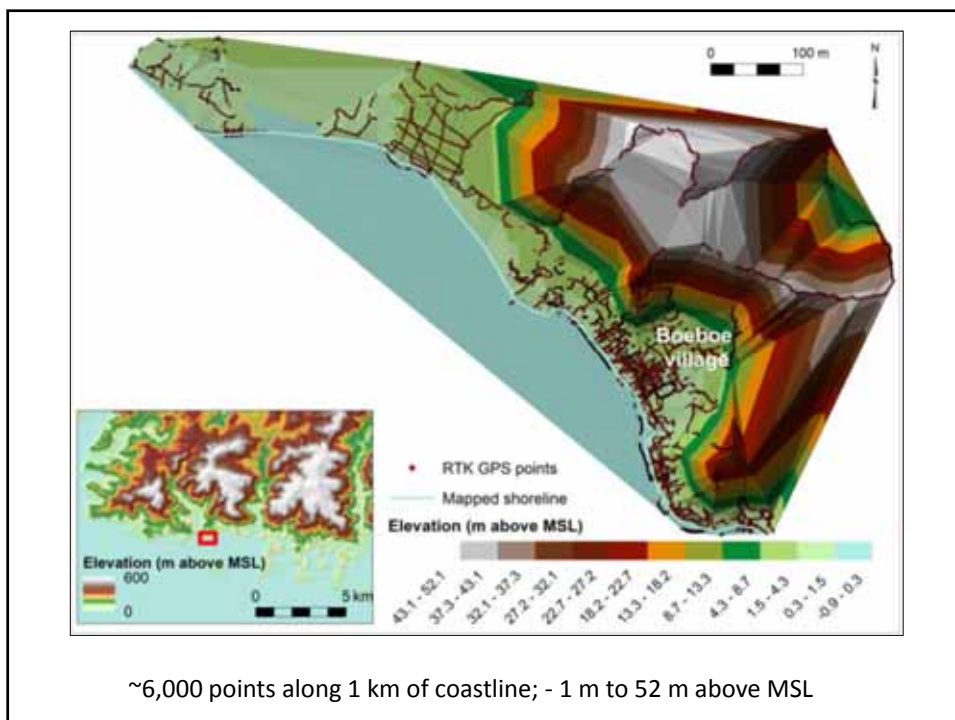




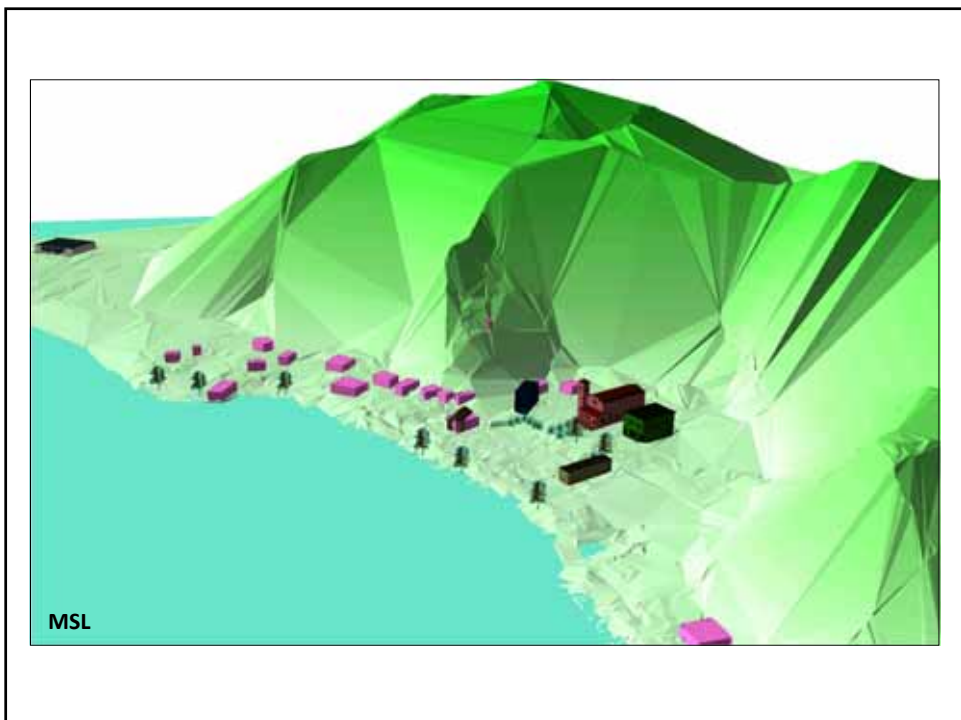
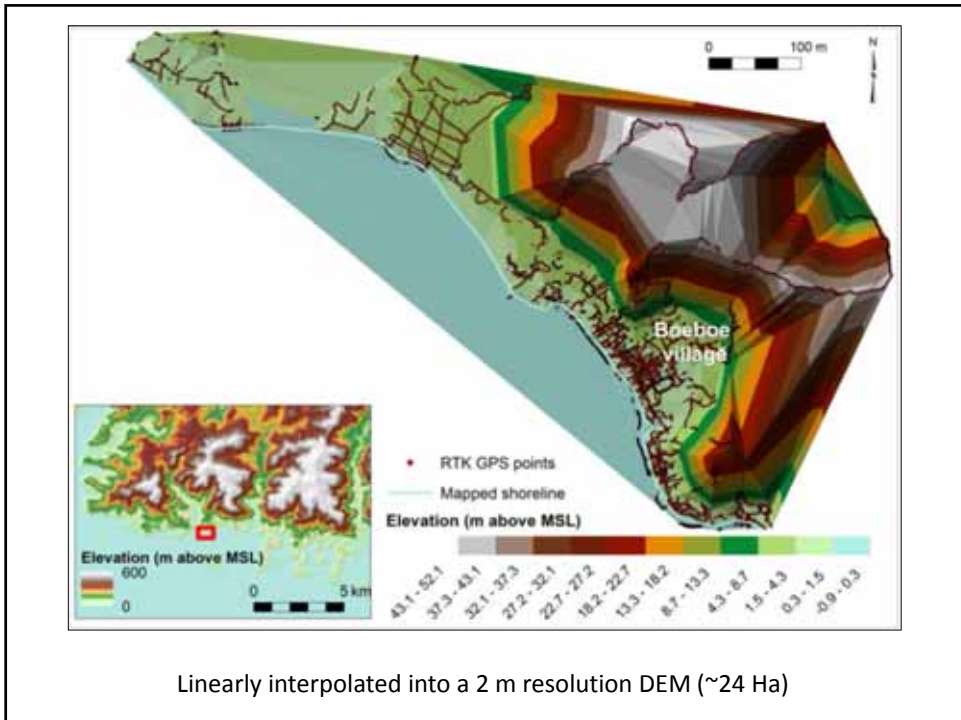
Slopes "smoothed" using paper mache (paper mixed with water-based glue)

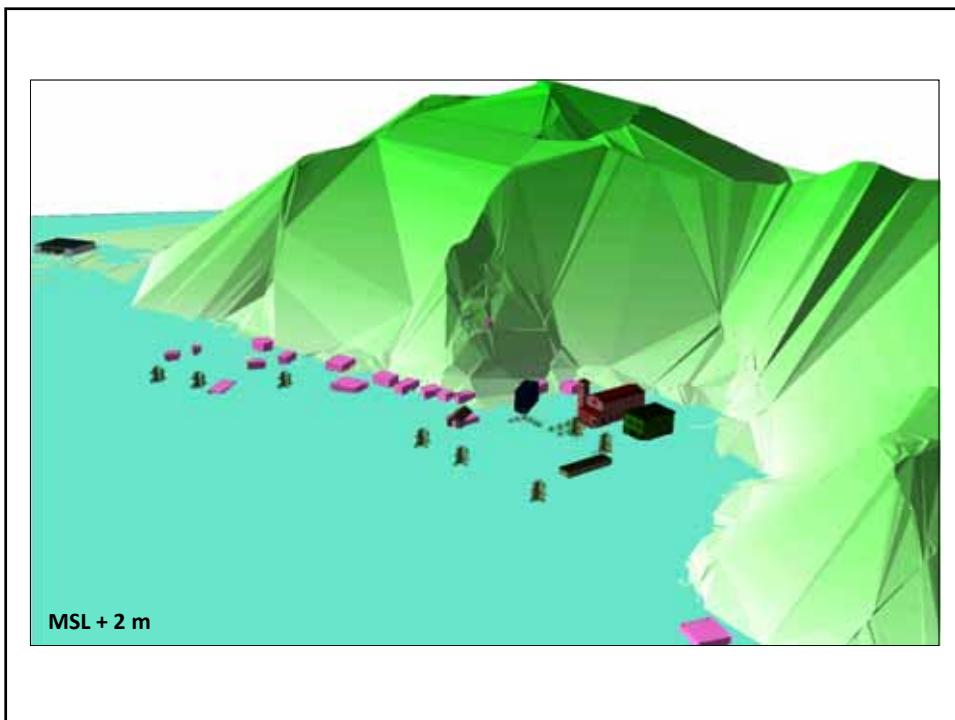
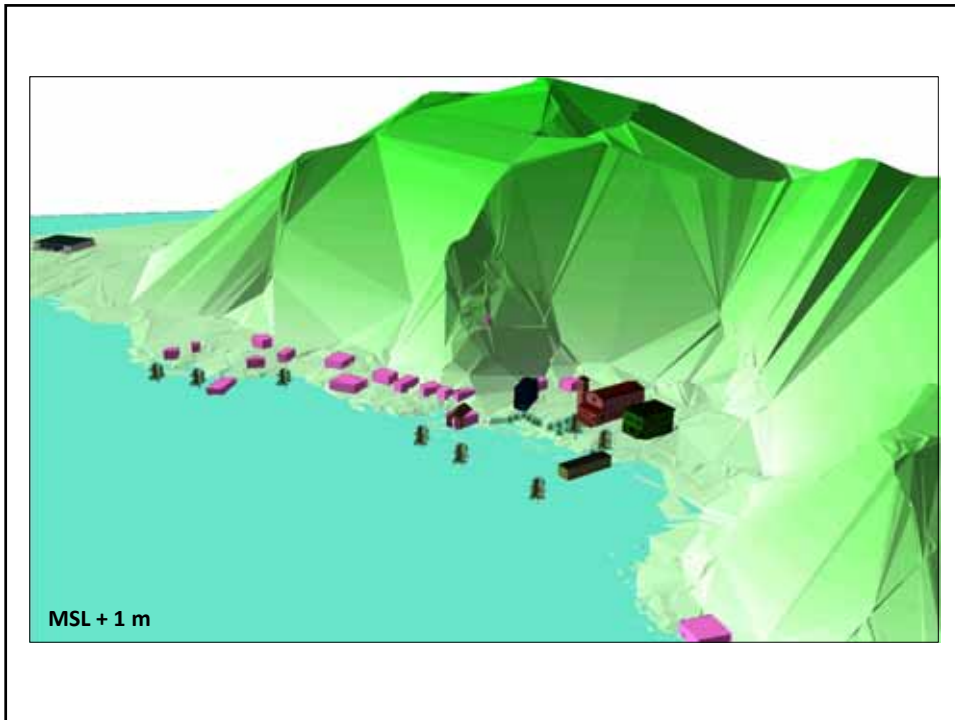


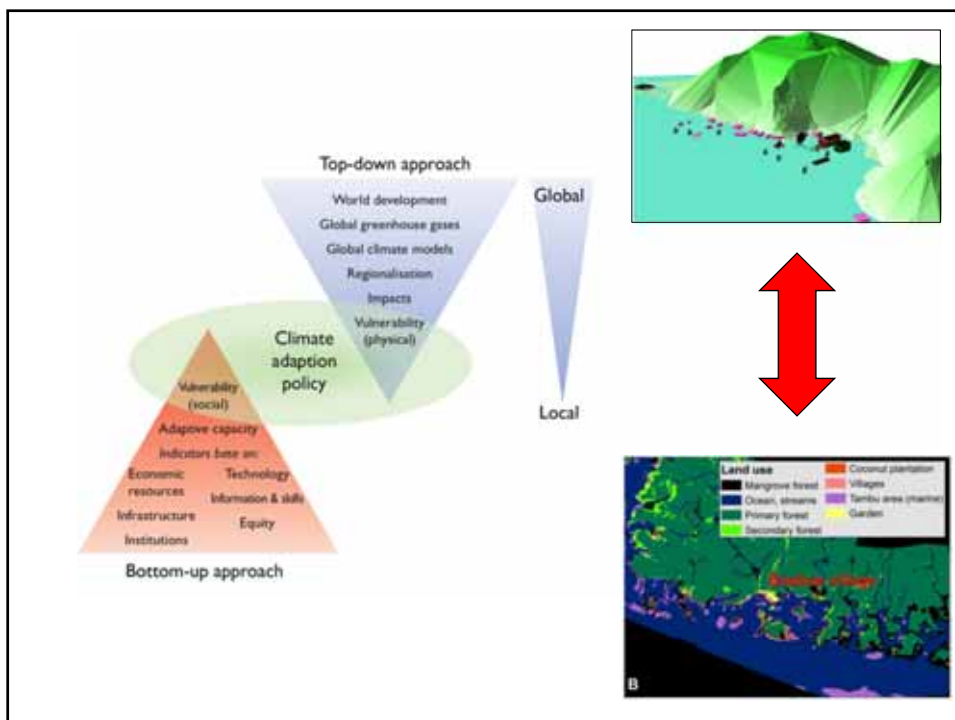
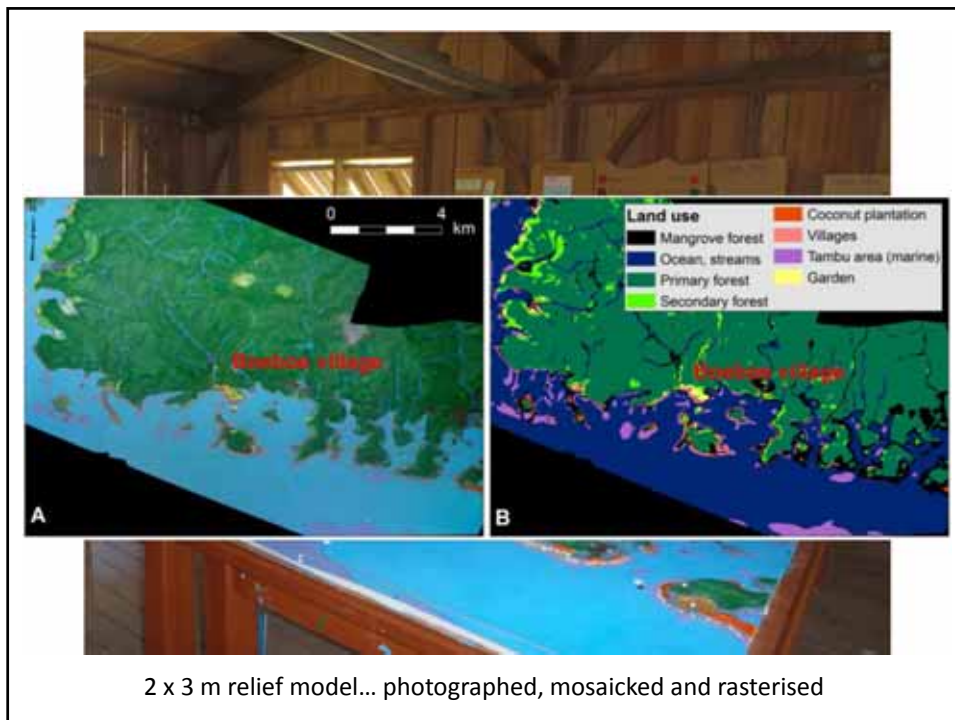
Pre-established legend was painted on relief model



~6,000 points along 1 km of coastline; - 1 m to 52 m above MSL











Women mentioned the ongoing degradation of ecosystems such as mangroves and gardens due to SLR



"74-year old woman identifying old village site and track before WW2"



Lessons learnt...

Logistics:

- Source local materials if possible
- Cardboard is great but wont last long on tropics

Technical:

- Complementing datasets... particularly when assessing environmental issues at different scales and precision requirements

Social:

- P3DM is an effective tool to empower members of community
- Facilitating the process is challenging and extra time has to be allowed

Future...??



Questions??



Javier Leon
jleon@usc.edu.au

usc.edu.au

© University of the Sunshine Coast, QUEENSLAND AUSTRALIA | CRICOS Provider Number: 01599D

Rise, and shine.

Questions??



Javier Leon
jleon@usc.edu.au

Coastal Management
 Publication details, including instructions for authors and subscription information:
<http://dx.doi.org/10.1080/00220191.2015.1044838>

Supporting Local and Traditional Knowledge with Science for Adaptation to Climate Change: Lessons Learned from Participatory Three-Dimensional Modelling in BoeBoe, Solomon Islands
 Javier S. Leon^a, James Herdendorf^b, Robin Jensen^c, Simon Gilbert^d, Jimmy Ransaka^e & Cathi D. Woodroffe^f

Check for updates

^aSchool of Science and Engineering, University of the Sunshine Coast, Maroochydore DC, QLD, Australia
^bSchool of Civil Engineering, The University of Queensland, St. Lucia, QLD, Australia
^cInternational Union for Conservation of Nature, Glend, Switzerland
^dThe Nature Conservancy, Brisbane, QLD, Australia
^eLikiep Land Conference of Tribal Community, Chetani, Solomon Islands
^fSchool of Earth and Environmental Sciences, University of Wollongong, Wollongong, NSW, Australia
 Published online: 26 Aug 2015.

To cite this article: Javier S. Leon, James Herdendorf, Robin Jensen, Simon Gilbert, Jimmy Ransaka & Cathi D. Woodroffe (2015) Supporting Local and Traditional Knowledge with Science for Adaptation to Climate Change: Lessons Learned from Participatory Three-Dimensional Modelling in BoeBoe, Solomon Islands, Coastal Management, 47(4), 454-478, DOI: 10.1080/00220191.2015.1044838
 To link to this article: <http://dx.doi.org/10.1080/00220191.2015.1044838>

usc.edu.au

© University of the Sunshine Coast, QUEENSLAND AUSTRALIA | CRICOS Provider Number: 01599D

Rise, and shine.