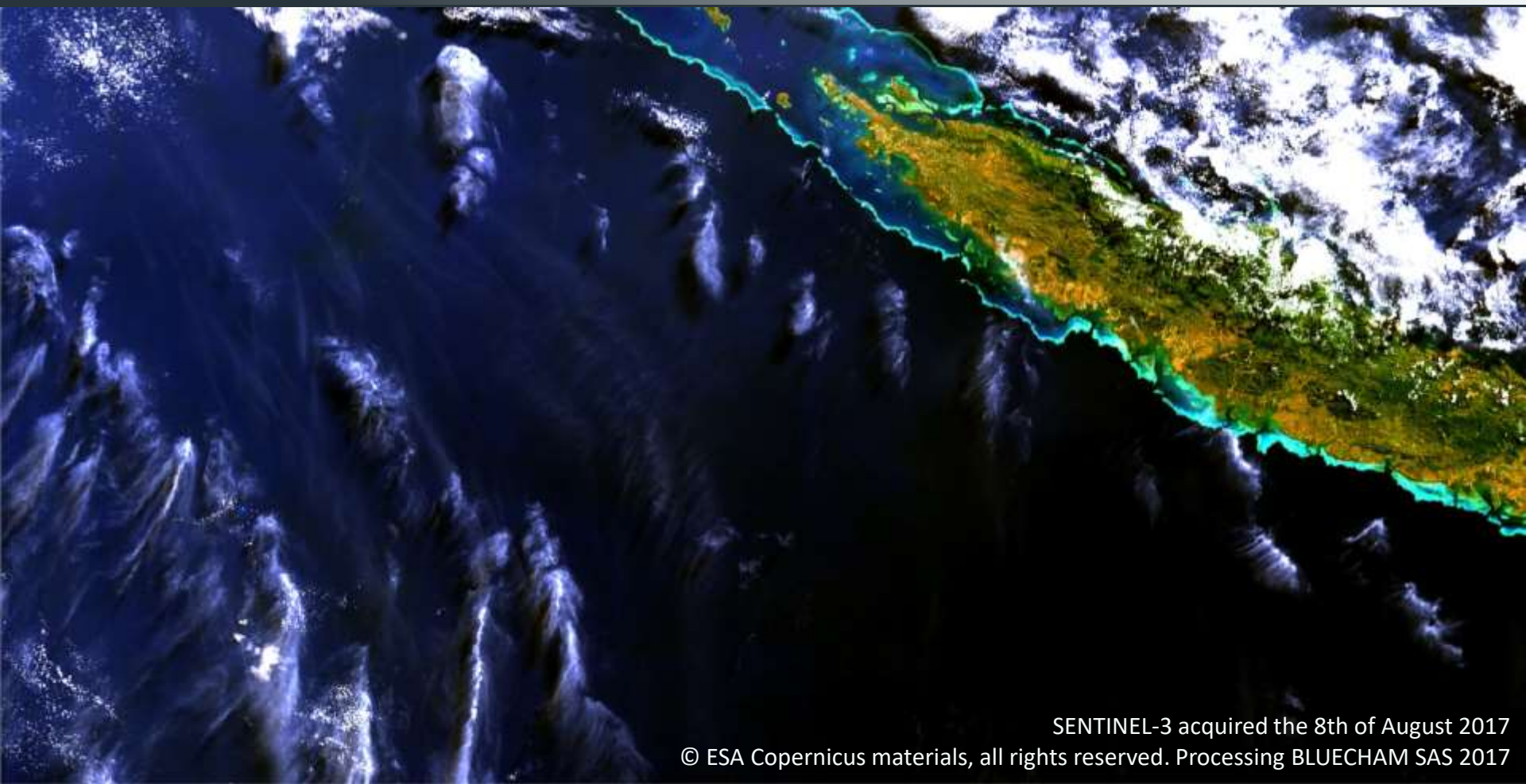


THE MONITORING OF MARITIME INCIDENT USING REMOTE SENSING AND CLOUD SOLUTION

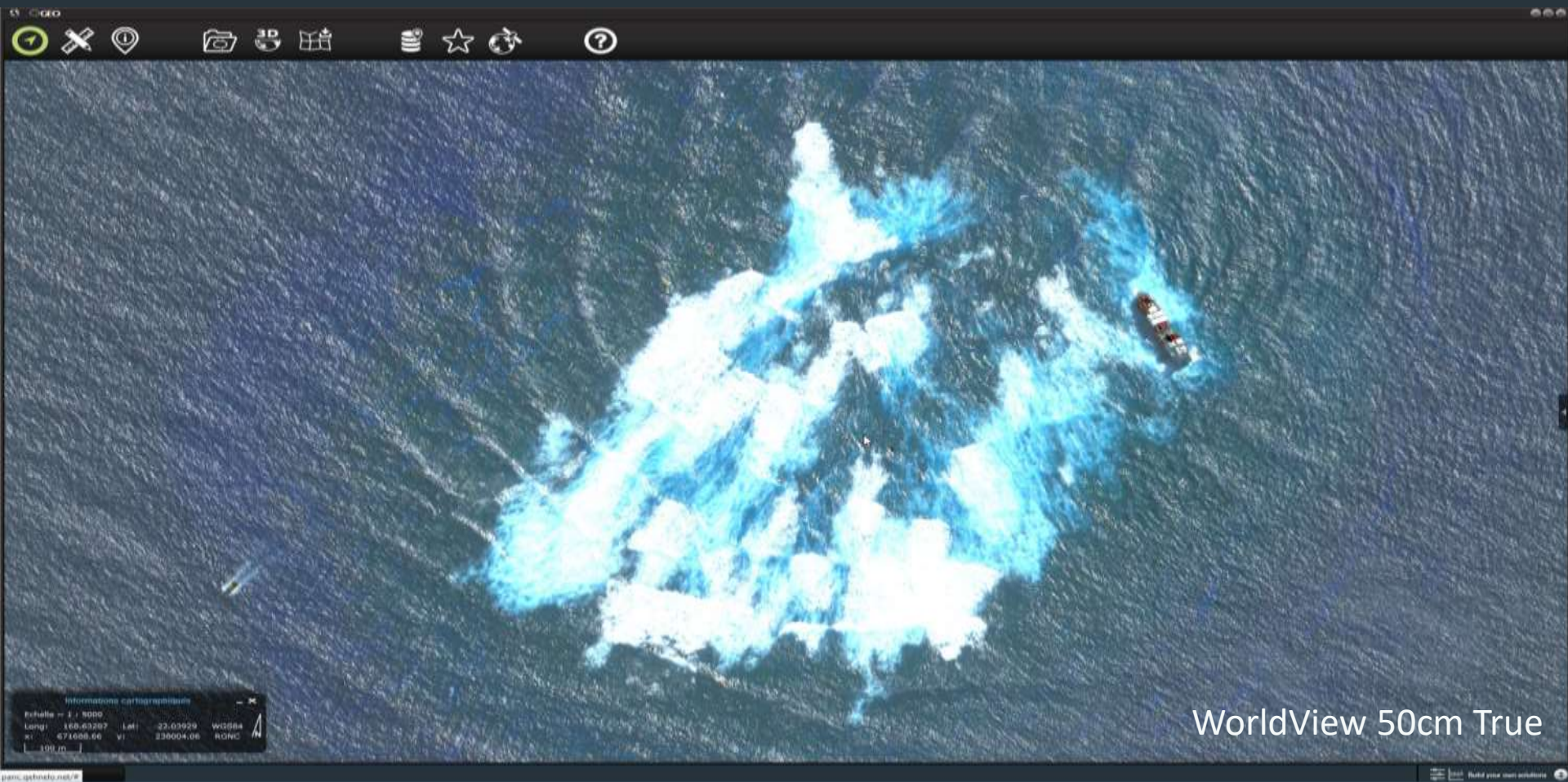
**The Pacific
GIS&RS User
Conference**



SENTINEL-3 acquired the 8th of August 2017

© ESA Copernicus materials, all rights reserved. Processing BLUECHAM SAS 2017





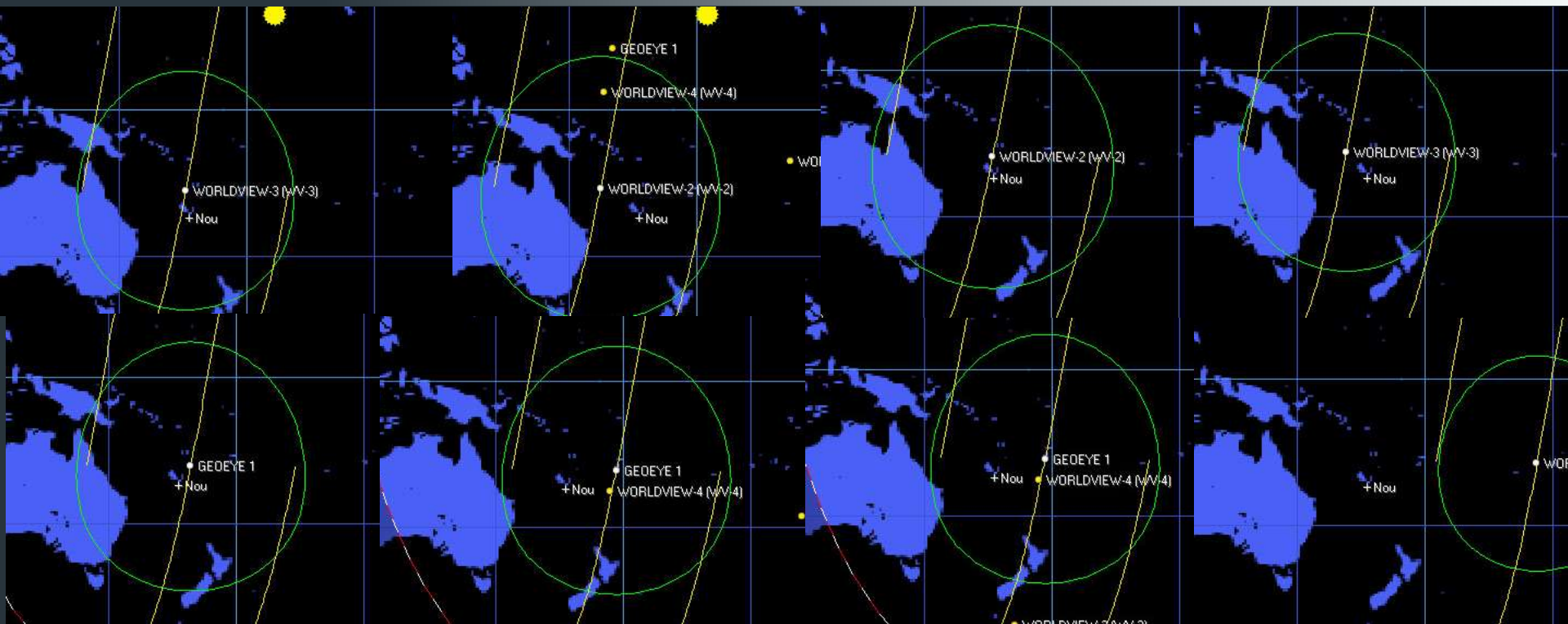
- Monitoring of the operational team during the early phase of fuel removal
- Access to daily observations of the situation
- Assess the technology for operational use



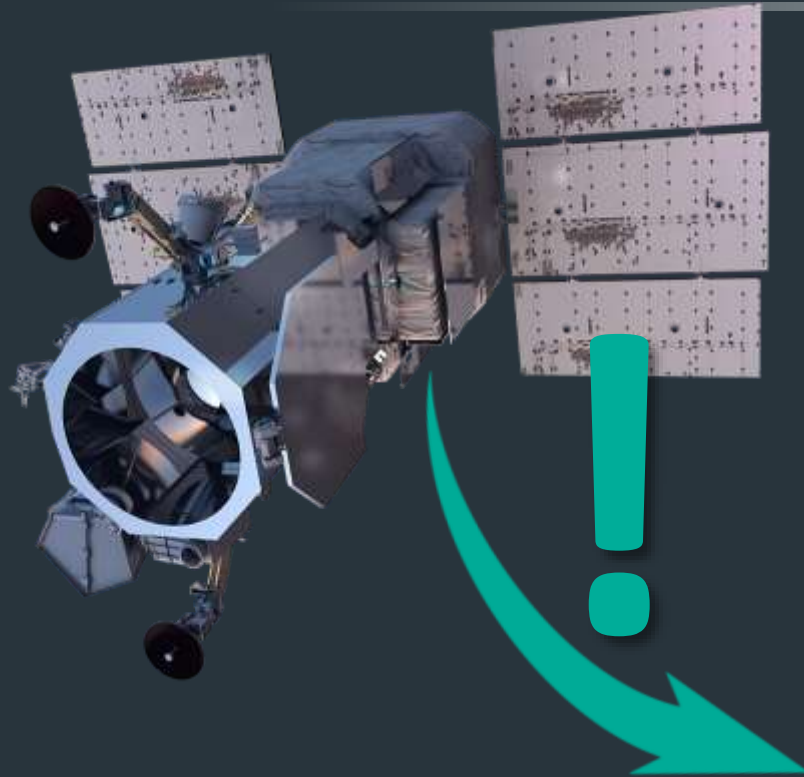


30 to 50 cm, 4/16 bands live web streaming
DigitalGlobe Imagery web services with daily acquisitions
BLUECHAM's Qëhnelö™ technology for front end applications





7 VHR acquisitions between the 23rd of July 2017 and the 28th of July
1st image acquired the Sunday 23rd of July at 10:08am



Time between the satellite acquisition and the information Consumption by the users is **critical**

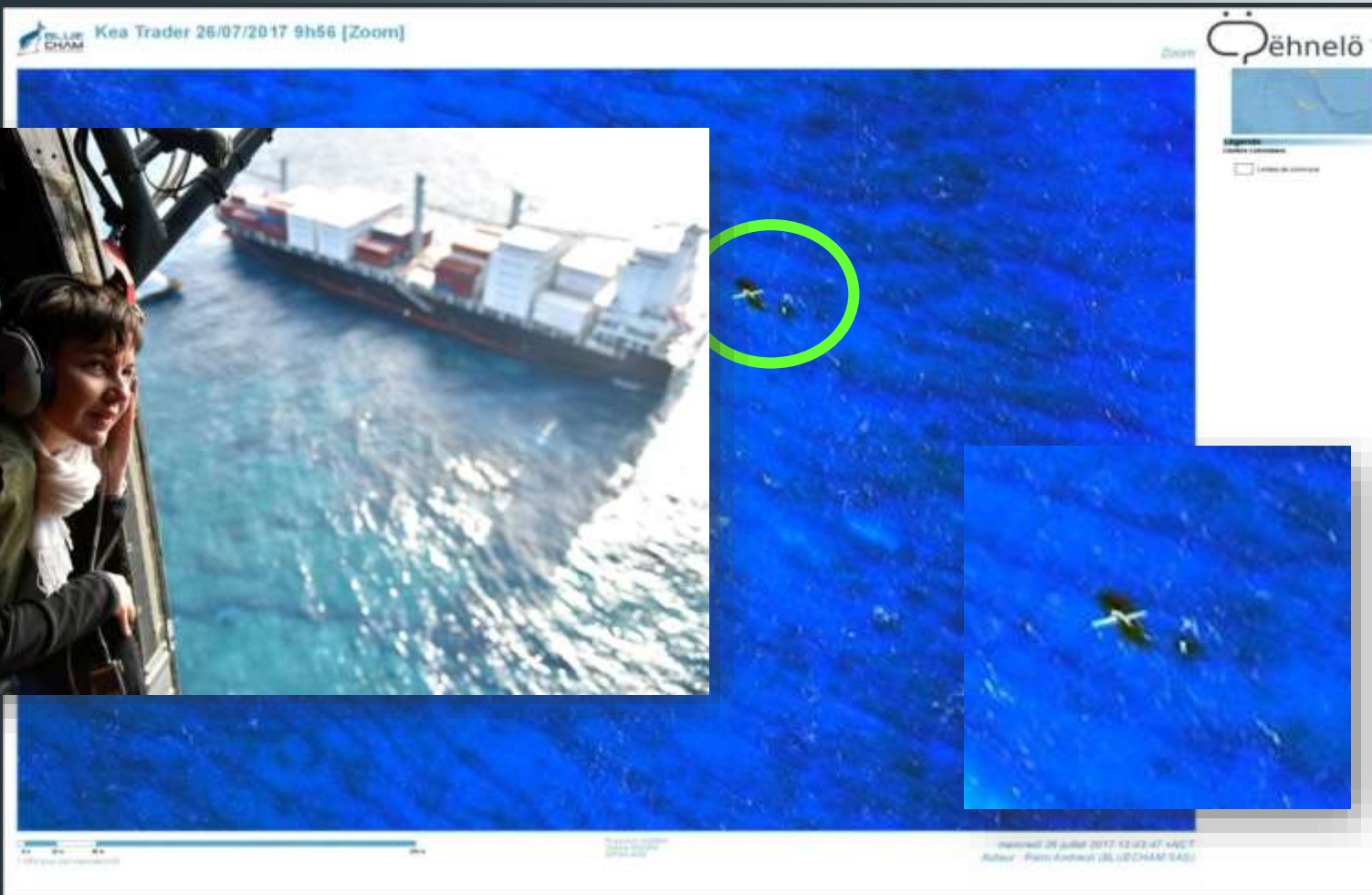
Between 40 minutes and 2.35 hours
Average of 1.06 hours





Information: sailing/shipname
 Scale: 1:1000
 Long: 168.62718 Lat: 22.02708 WGS84
 W: 672221.80 Y: 230240.24 MGRS
 1.0 m

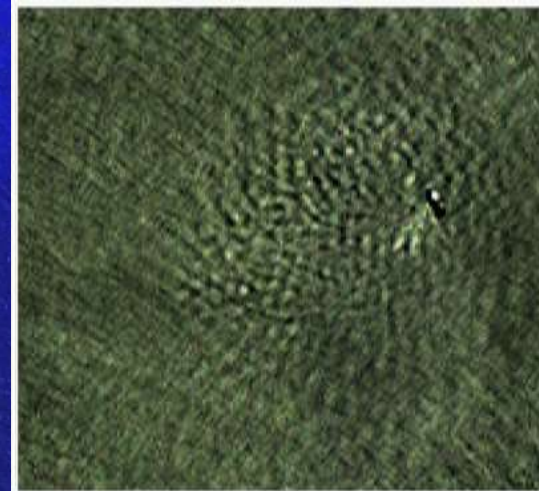
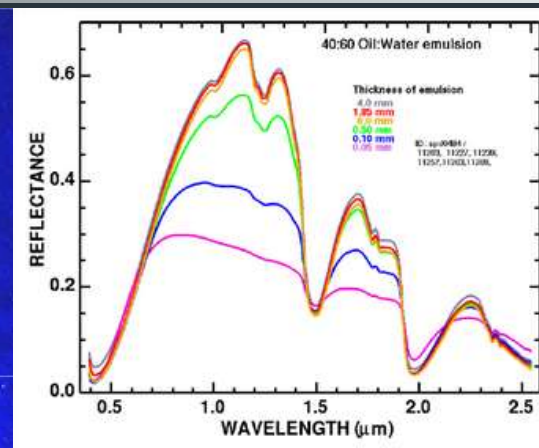






Kea-Trader 1:1000ème – 26 juillet 2017 ACQ2/2 10h26, 30cm True
Détection d'une zone d'irisation de surface dans trois directions Sud







Receiving stations

Acquisition strategy

Preprocessing

All scales

Optic

Radar

AIS



Personal Computer

Cross
Analyse
Share



Datacenters

Distributed processing



MR



HR



VHR





Today (2017)...

5 VHR Satellites

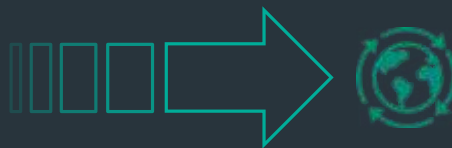
Daily revisit (near 11:00am)

50 to 30cm resolution

4 to 16 bands

18 years of archives

Either...



... Tomorrow (2020)

Worldview Legion

Acquisition every **30 minutes**

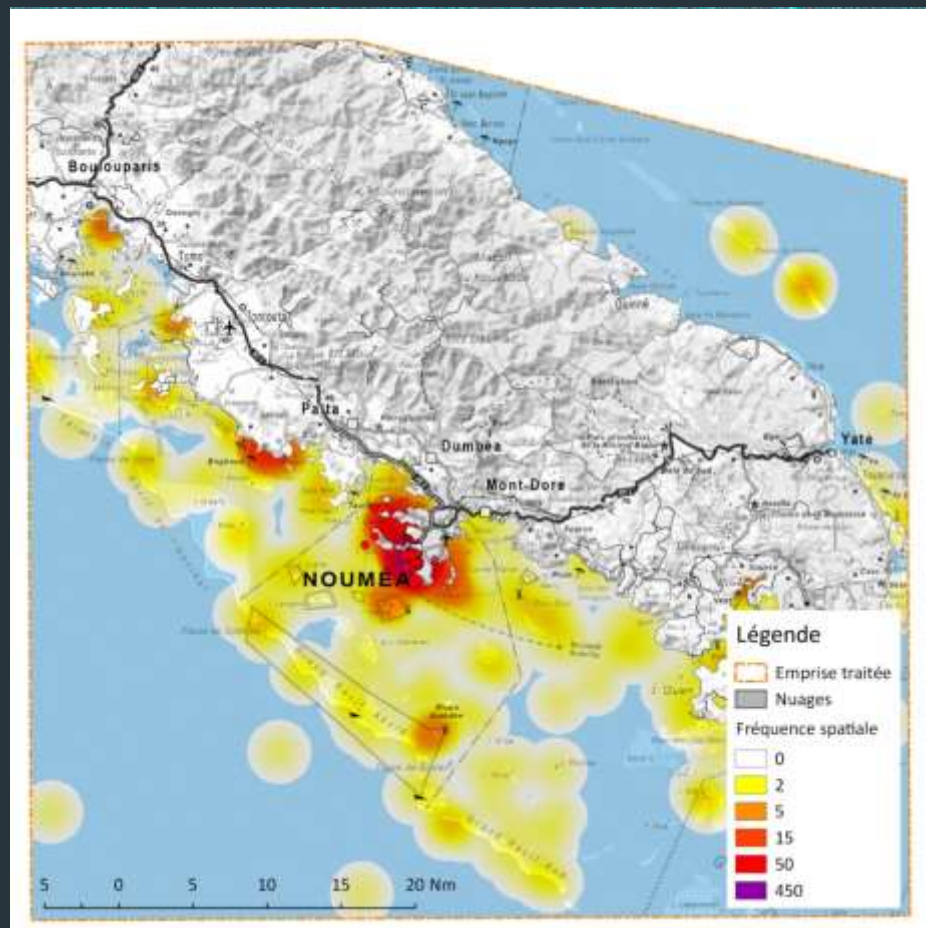
50 to 30cm resolution

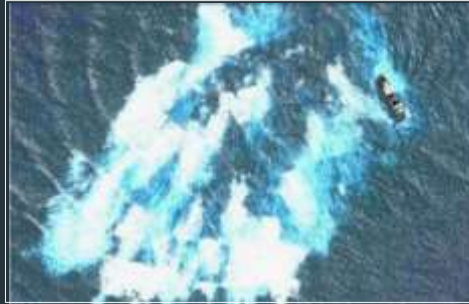
...Or...





WorldView-2 50cm – 26/07/2017





Vinaka
THANK YOU !



THE MONITORING OF MARITIME INCIDENT USING REMOTE
SENSING AND CLOUD SOLUTION

**The Pacific
GIS&RS User
Conference**