



PARTneR

Pacific Risk Tool for Resilience



Framework for Resilient Development in the Pacific

Example Strategic Actions on Risk Assessment

- “Strengthen knowledge on the causes, local impacts and response to climate change, hazards and disasters, and build capacity for local adaptation and other risk management measures, through formal and non-formal education systems, including for loss and damage.”
- “Collect post-disaster time series information that separates elements of the cause (hazard, vulnerability and exposure) and the effect (impact or consequence) to inform estimates of future impacts (risk assessments) and to monitor progress toward risk reduction targets.”

What do we mean by risk tools?

- Risk modelling software helps people understand the impact from hazard events.
- The software is designed to perform a complex calculation simply and quickly without needing specialist modelling knowledge.



Why use a risk tool?

Understanding risk

Risk Reduction underpins Sustainable Development



Risk Assessment underpins Risk Reduction



Understanding the impacts of disaster is vital



Risk tools can estimate disaster impacts



Five partner organisations



2 Pacific Island Countries



NZ Aid funding



RiskScape

3 year pilot project

Outputs



Pacific risk mapping and decision support tool developed



Data collation and management system developed

Risk tool training developed and applied



Sustainable partnership model developed and rolled-out

The Importance of Data

Risk Tools such as RiskScape can estimate impacts:

- damage state,
- human loss,
- replacement costs,
- displacement....

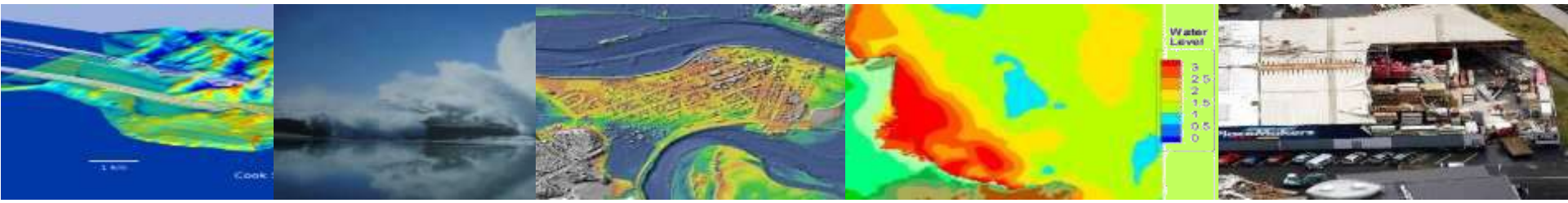
But like any risk assessment framework it requires data.





What is RiskScape?

- A research programme to study the impacts of natural hazards on communities and to develop models to forecast future impacts;
- RiskScape impact and loss modelling software that is freely available and provides information about what could happen in a natural hazard event.

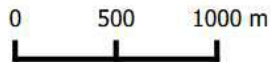


RiskScape video



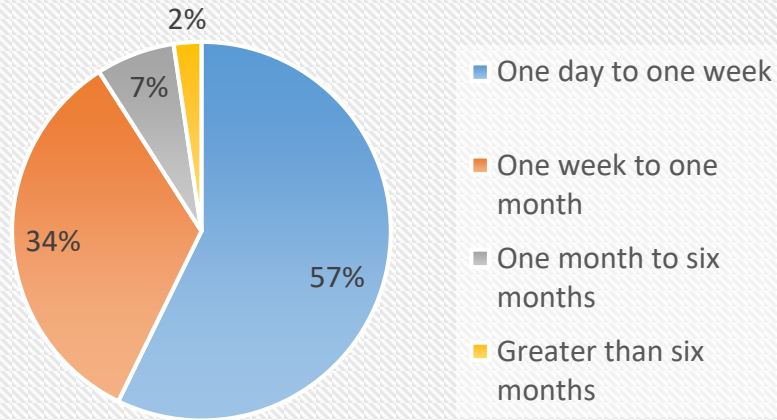
RiskScape

Demonstration: Port Vila 1 in 100 yr flood and estimated damage to buildings.

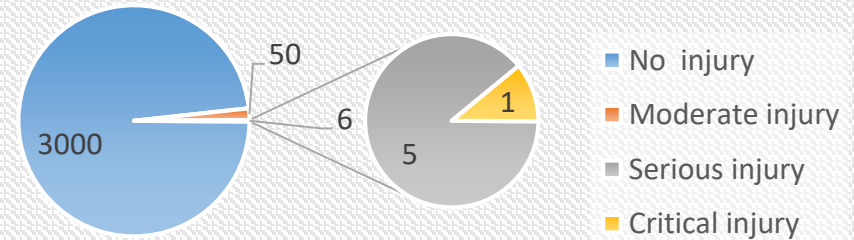


Produced by NIWA using RiskScape on behalf of the PARTneR: Pacific Risk Tools for Resilience project. Demonstration purposes only.

Estimated number of people displaced



Estimated number of people injured



Demonstration: Port Vila Flood Scenario
Estimated Building Loss in Vatu (Millions)
100 yr Flood Event



0 500 1000 m

NIWA
Taiohoro Nukunangi

RiskScape

Produced by NIWA using RiskScape on behalf of the PARTneR: Pacific Risk Tools for Resilience project. Demonstration purposes only.

PARTneR – Pacific Risk Tool for Resilience

Introducing PARTneR



PARTneR

Pacific Risk Tool for Resilience



<https://www.riskscape.org.nz/international-projects>

PARTneR – Pacific Risk Tool for Resilience

Case studies for Vanuatu and Samoa

Vanuatu

1. Ashfall impacts on Tanna Island
2. Tropical cyclone impact for urban planning in Lenakel, Tanna
3. Connecting drought and extreme rainfall to agricultural production

Samoa

1. Tsunami risk and loss modeling
2. Near real-time tropical cyclone impact
3. Landside risk for Mt Vaea, Apia

Looking forwards...



PARTneR

Pacific Risk Tool for Resilience



<https://www.riskscape.org.nz/international-projects>

PARTneR – Pacific Risk Tool for Resilience

Lessons learnt

Need for improved...

- Data availability
- Data collection standards
- Regular collection after disaster events
- Coordination between stakeholders
- Data sharing agreements
- A central data repository
- Technical training in risk assessment and risk tools



Key opportunities and challenges

Sustainability

- Partnership- Pacific organization
- Technical backstopping – country level
- Multi-level trainings
- Participatory
- Data collection tools and systems
- Suite of products for the Pacific

Challenges

- Hazard models
- Centralized database with data sets
- Data sharing agreements

Get more information....

- **RiskScape and PARTneR website:**
- www.riskscape.org.nz/international-projects

- **To download RiskScape NZ:**
- <https://www.riskscape.org.nz/get-riskscape>

- **For news on RiskScape:**
- www.riskscape.org.nz/news

Support using RiskScape

Manuals and support via the RiskScape wiki

<https://wiki.riskscape.org.nz/index.php/Overview>

Samoa:

Mr. Titimanu Simi

MNRE-DMO, Apia, Samoa

Phone: +685-67200

Email: titi.simi@mnre.gov.ws

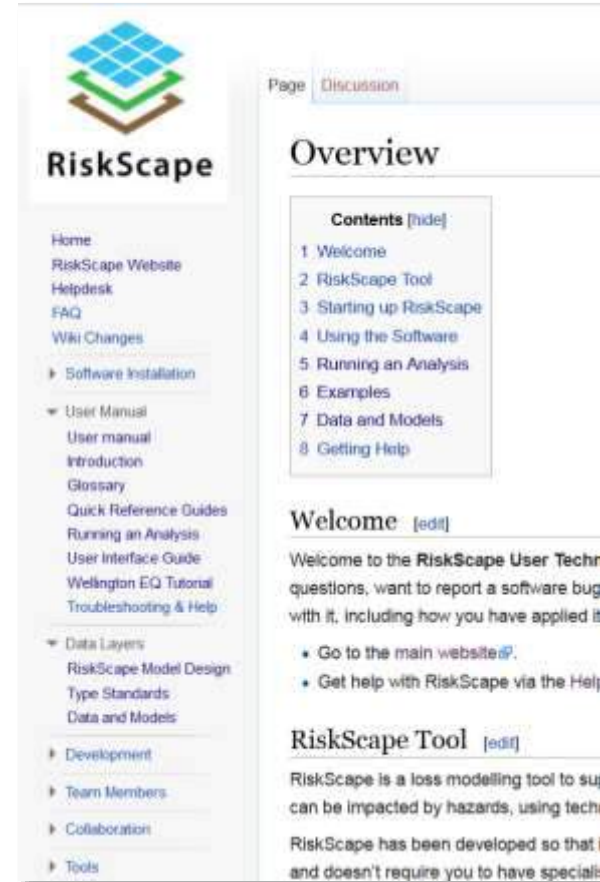
Vanuatu:

Mr. Johnny Tarry Nimau

National Disaster Management Office (NDMO), Port Vila,
Vanuatu

Phone: +678-22699

Email: Johnie@vanuatu.gov.vu

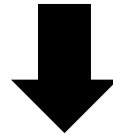


The screenshot shows the RiskScape wiki's 'Overview' page. At the top left is the RiskScape logo, which consists of a stylized grid of blue and green squares above the text 'RiskScape'. Below the logo is a navigation menu with items like 'Home', 'RiskScape Website', 'Helpdesk', 'FAQ', 'Wiki Changes', 'Software Installation', 'User Manual', 'Data Layers', 'Development', 'Team Members', 'Collaboration', and 'Tools'. The main content area is titled 'Overview' and includes a 'Contents [hide]' section with a numbered list of 8 items: '1 Welcome', '2 RiskScape Tool', '3 Starting up RiskScape', '4 Using the Software', '5 Running an Analysis', '6 Examples', '7 Data and Models', and '8 Getting Help'. Below the contents is a 'Welcome [edit]' section with a paragraph of text and two bullet points: 'Go to the main website' and 'Get help with RiskScape via the Help'. At the bottom is a 'RiskScape Tool [edit]' section with a paragraph of text.

Final Thoughts...

PARTneR provides an opportunity for:

- Data collection and management
- Data transformation into information and knowledge
- Science uptake and integration
- Coordination within and across government and other stakeholders
- Sharing data and information on impacts



We want a shift towards cross government engagement and good data management and use for DRR, DRM and CCA.

Summary

- RiskScape is a **technical risk assessment software platform** that is being **tailored for use in the Pacific**
- Currently have **ongoing case studies** and **trained coordinators** in Samoa and Vanuatu
 - RiskScape is expected to be expanded to other Pacific countries
- Though a technical tool, the exposure and impact **results can be exported as maps and tables** for various scenarios
 - Can contribute to national and regional planning and response mechanisms