

Photogrammetry
Development
at the Fiji Lands Department

Background

- ▶ Established in Lands Department in 1957
- ▶ To support mapping programs and national development for the region
- ▶ First carried out to meet the needs of the town planning section for up to date information in the urban growth regions
- ▶ In 1951 and 1953 coverage of the main islands was done by overseas aerial survey companies for topographical maps

- ▶ In 1957, small format camera mounted on a converted drover aircraft from the Royal New Zealand Air Force was used



- ▶ The Air Survey Section has evolved into a well equipped, organised and vibrant entity run by a team trained mostly overseas

Regional Partnership

- ▶ In 1966, the unit was commissioned to take photographs for regional governments
- ▶ The first overseas mission was undertaken in the then British Solomon Island Protectorate
- ▶ Further photography was carried out in Nauru, Tuvalu, Kiribati and Tonga

Technology

▶ Analogue Machine



▶ Analytical machine – 1980s



▶ Digital machine – 2009



Product and Achievements

- ▶ Aerial Photos



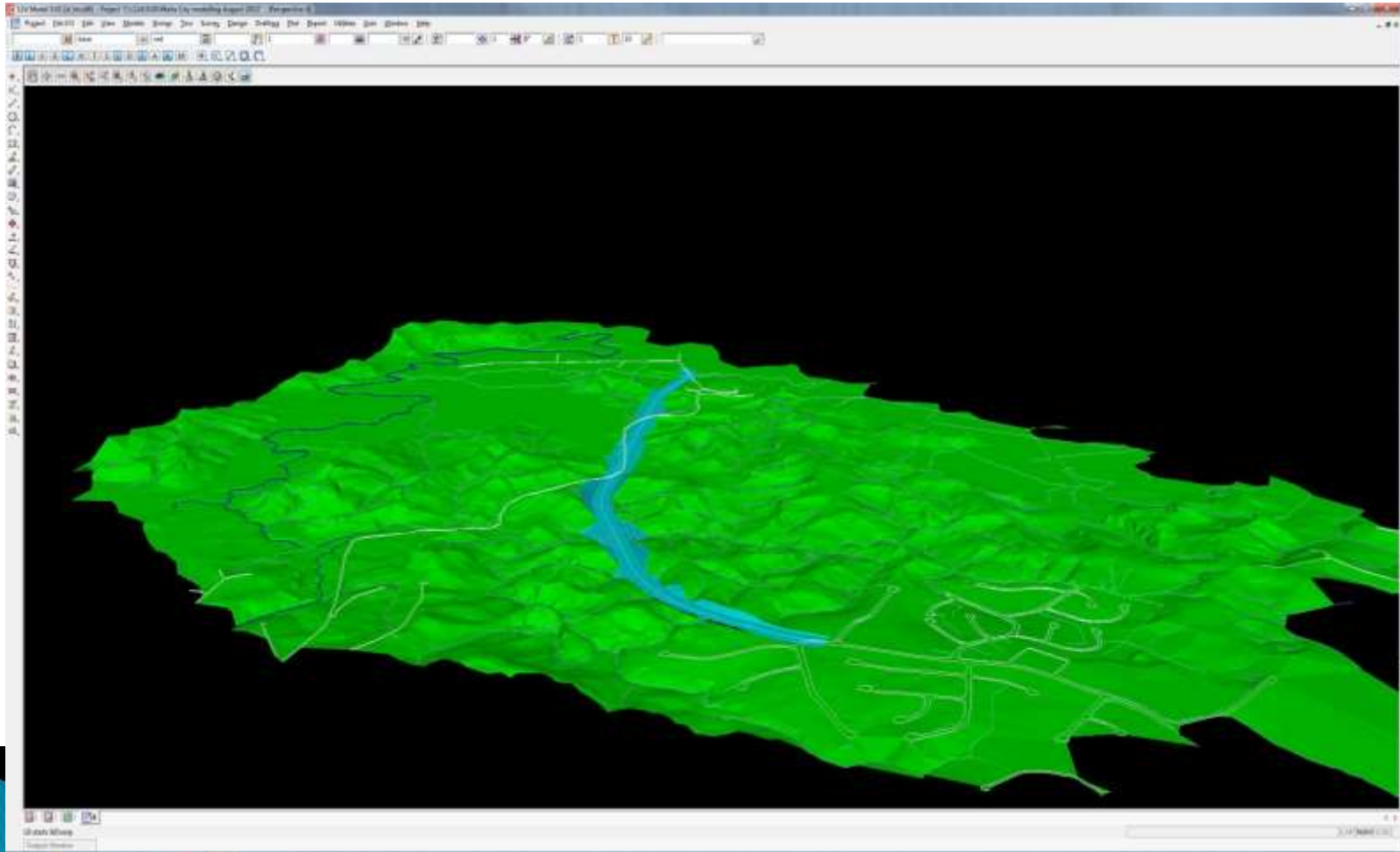
- ▶ Large and small scale mapping



- ▶ Imagery Acquisition – aerial 2009 & 2010 and satellite – 2015
- ▶ Aerial Triangulation



- ▶ Field check and QC
- ▶ Release of data – timeline



- ▶ Establishment of Remote Sensing Unit – 2016
- ▶ Image overlay for accretion/ erosion



Challenges

- ▶ Recruitment
- ▶ Training
- ▶ Datum
- ▶ Availability of stakeholders
- ▶ Quality of data – imageries, controls, accuracy
- ▶ Technology
- ▶ Reduce work timeline
- ▶ Technical knowledge
- ▶ Retain skilled staff
- ▶ Funds

Opportunities

- ▶ Vacancy
- ▶ Short training – overseas
- ▶ Workshop and conference – locally and overseas
- ▶ Work attachment – overseas
- ▶ Enhance current product, up–skilling and develop knowledge
- ▶ New photogrammetry and remote sensing products

Any Question?

THANK YOU

