

Forest Change Detection in Fiji as Wall to Wall Mapping

Viliame Tupua

REDD+ Fiji

Fiji Forestry Department



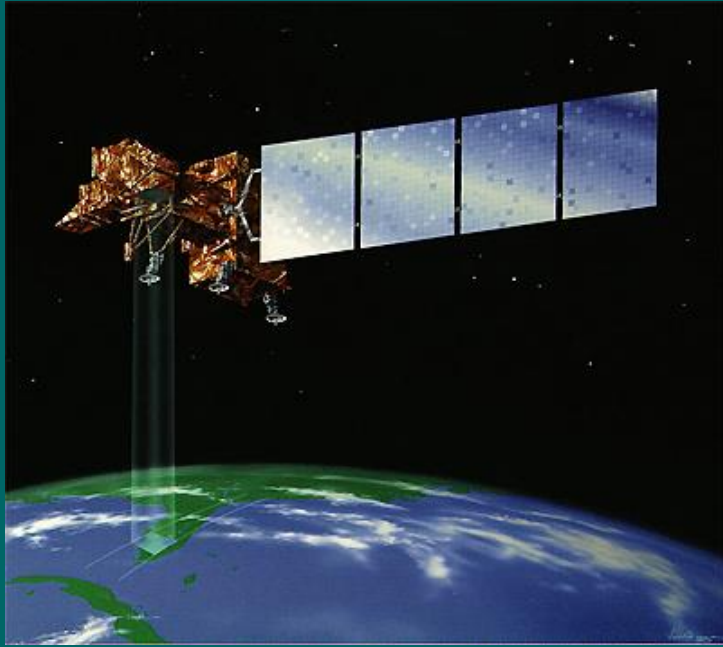
REDD+ Fiji

- **Financed by World Bank**
- **Since ..**
- **University Hamburg subcontracted Geoinformatics Section of SPC:**

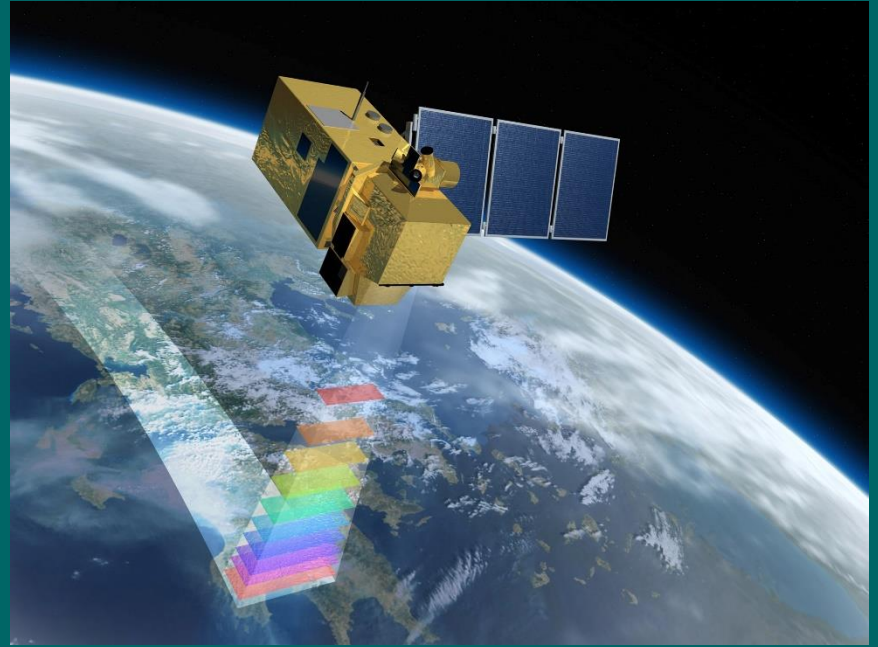


Deforestation area 2006 - 2016

Free Image Data Sources

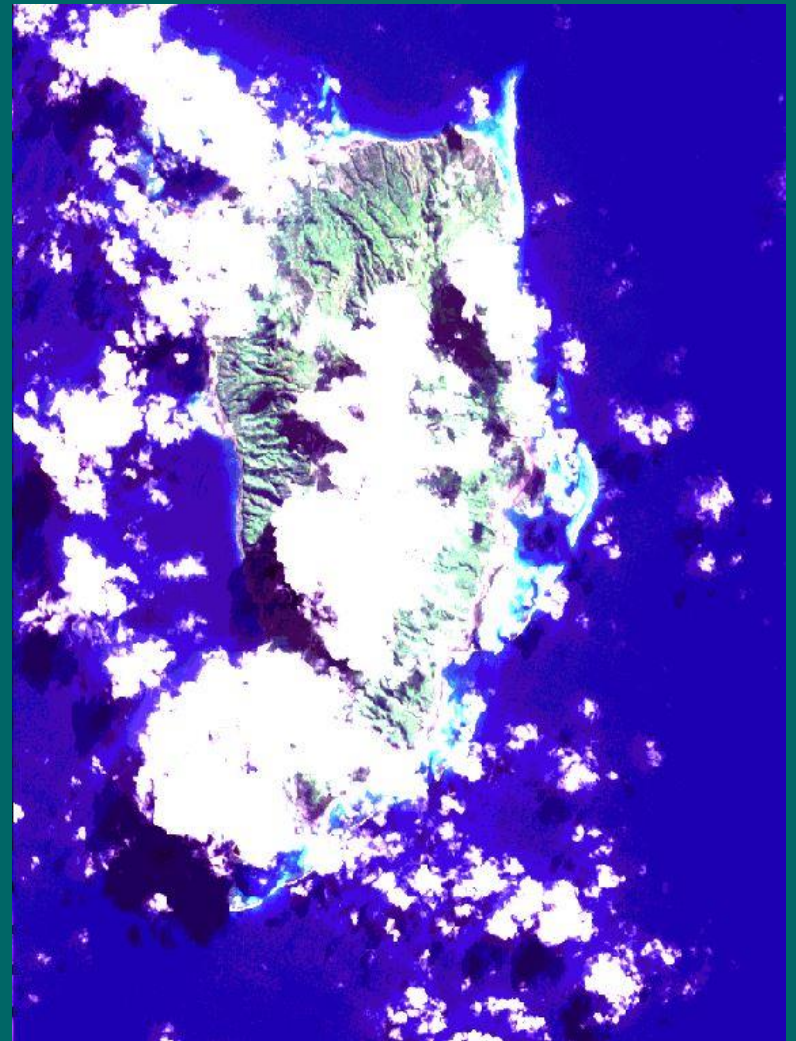
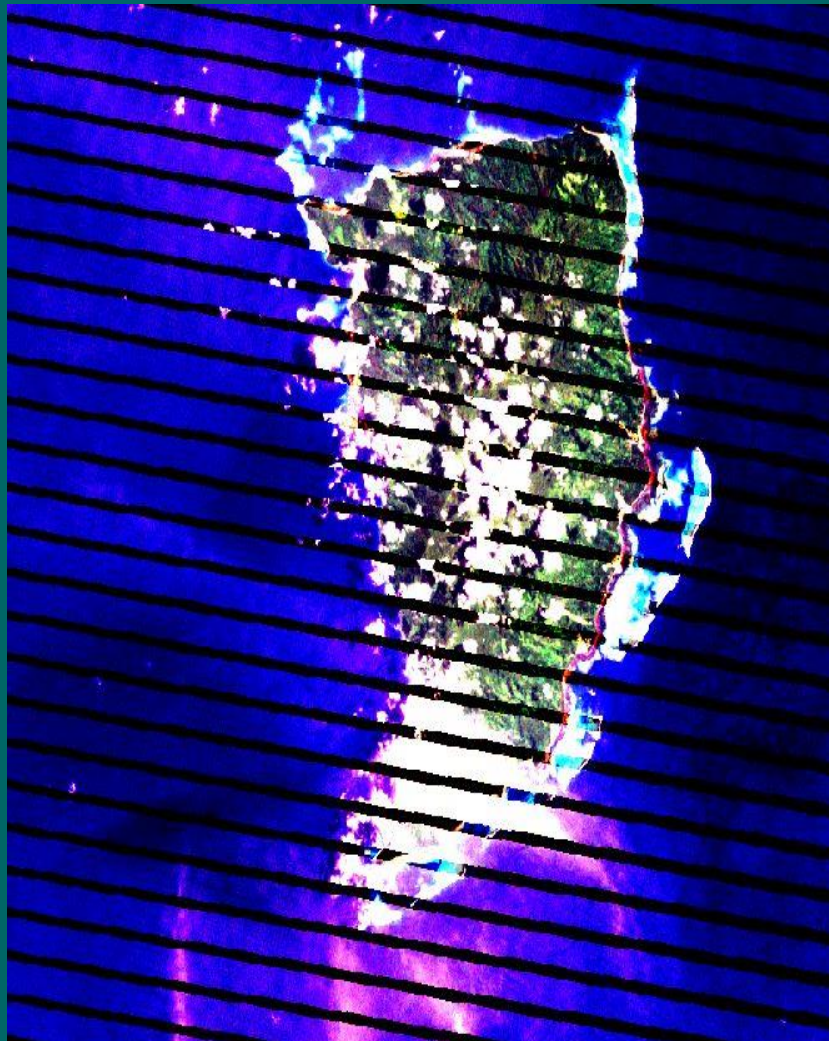


Landsat 7 and 8



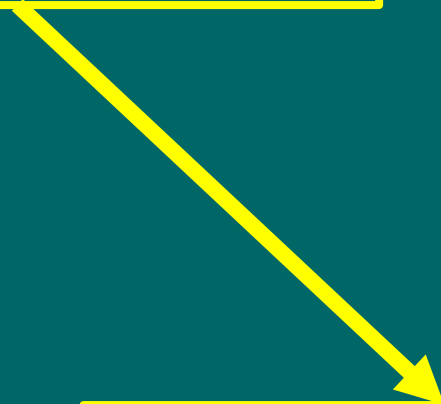
Sentinel 2

De-Striping Landsat 7



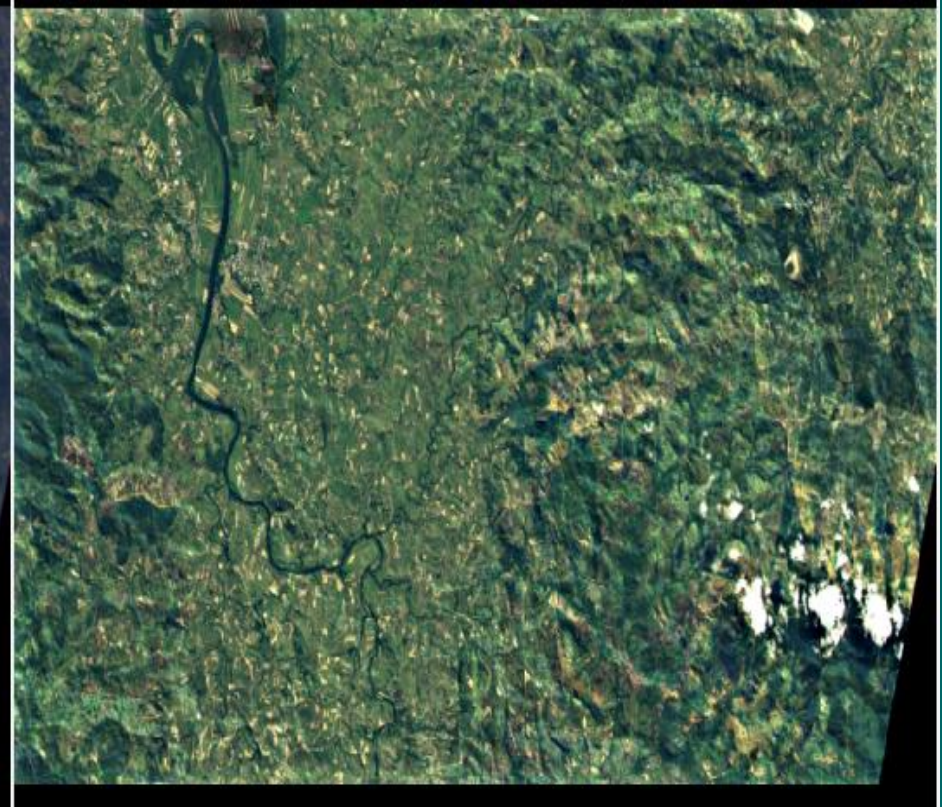
Geometric Correction

**WGS 84 UTM
(Image Data)**

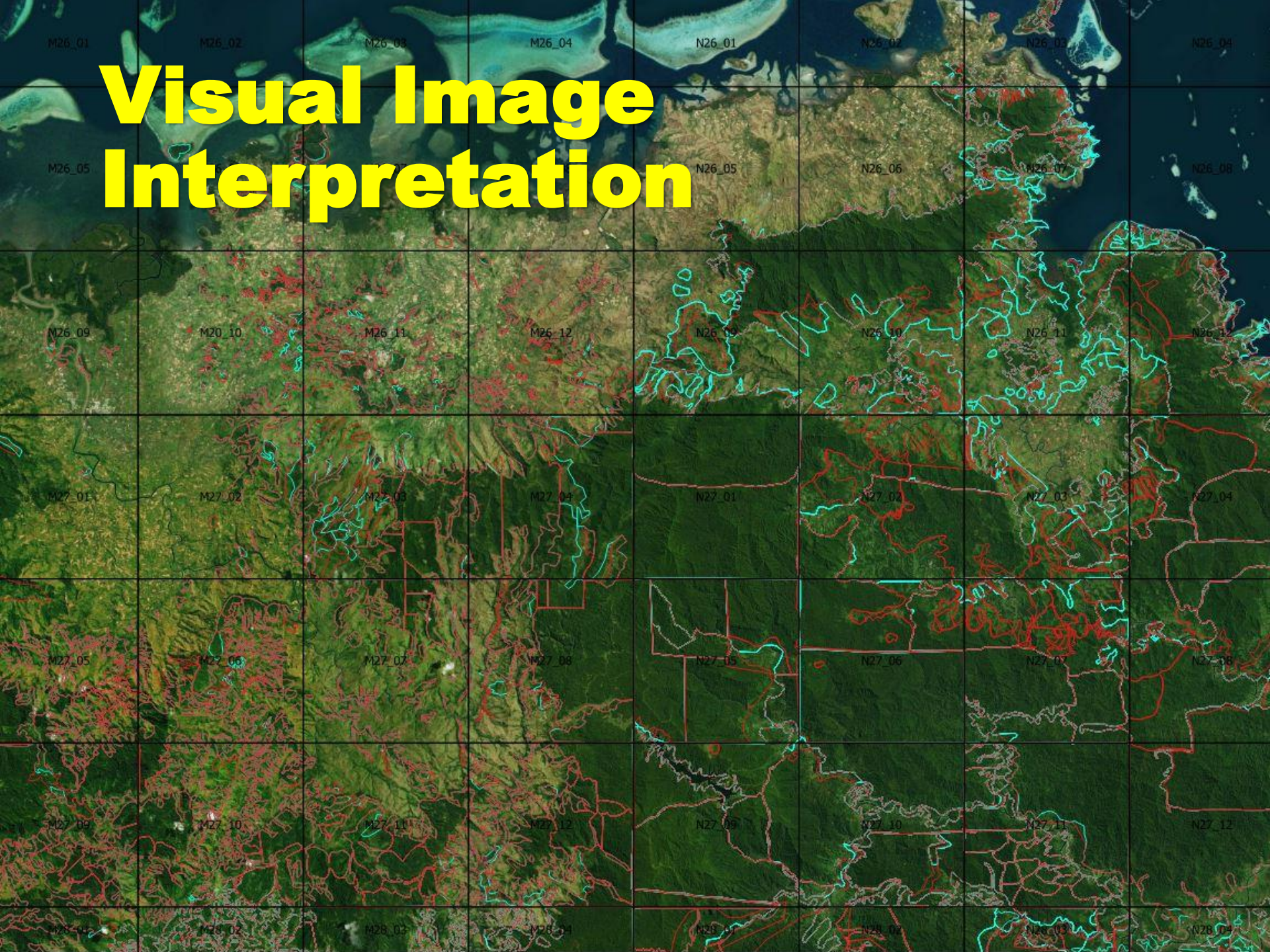


**WGS 72 FMG
(Fiji Maps)**

Atmospheric Correction

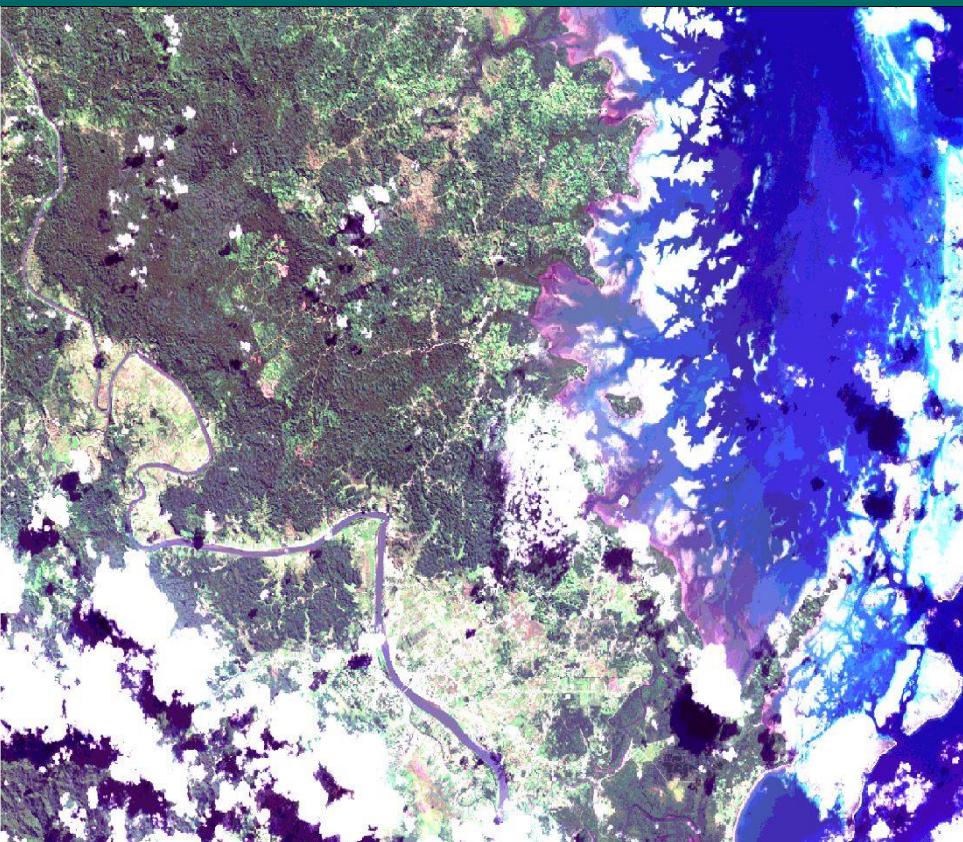


Visual Image Interpretation

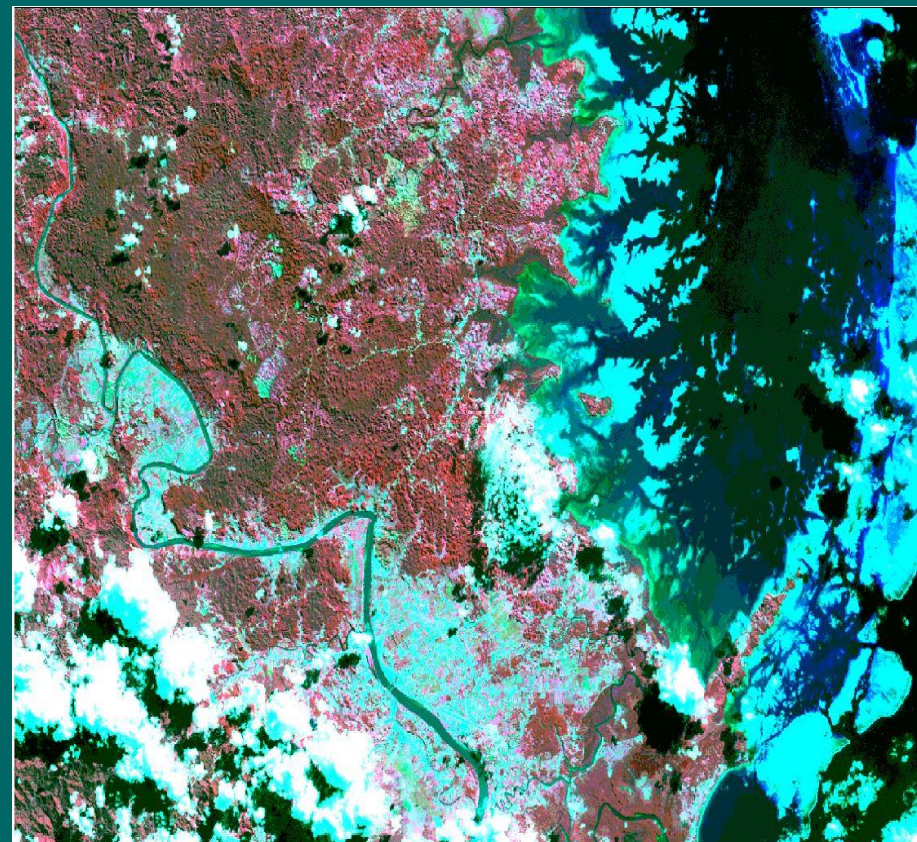


Toggle Between Display

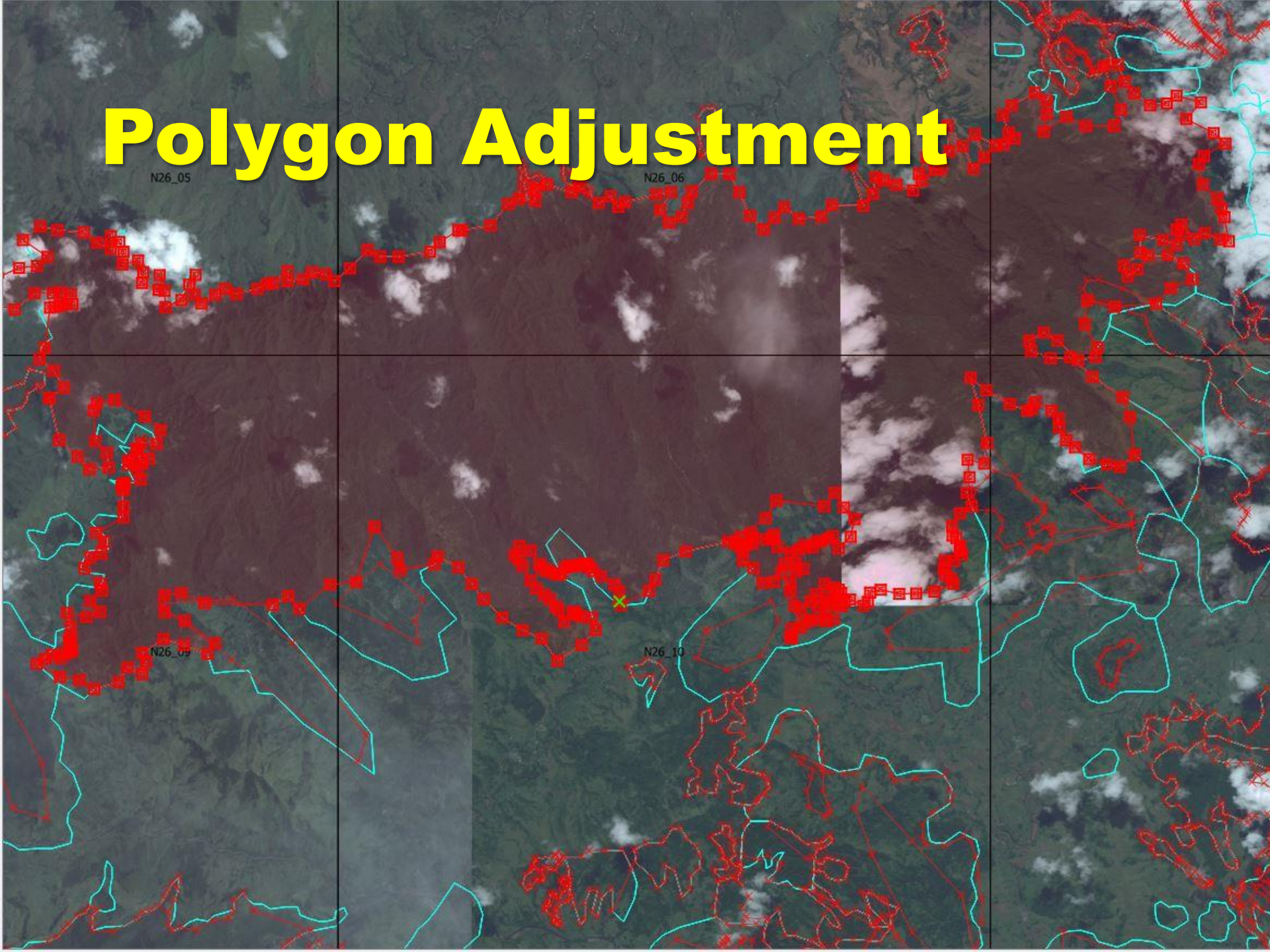
Landsat Natural Colour 1, 2, 3



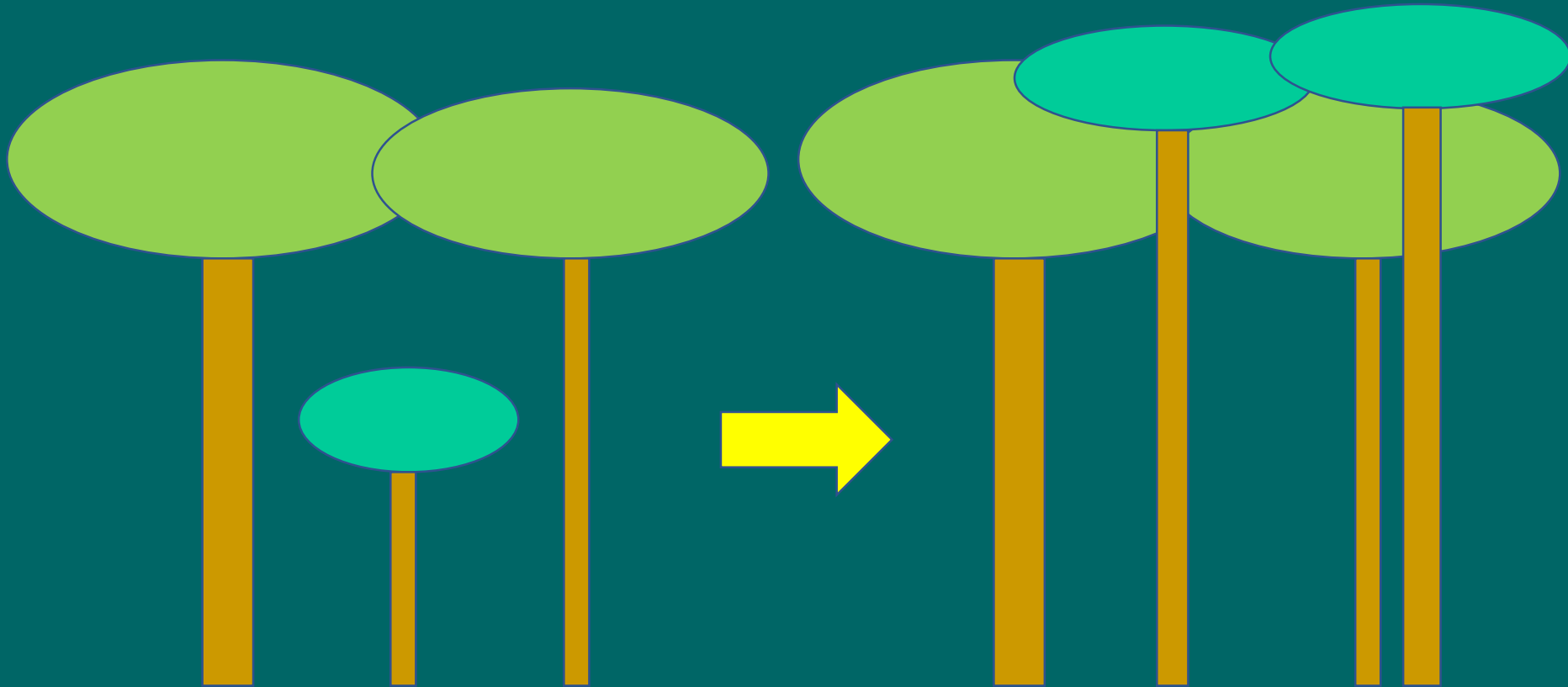
Landsat False Colour IR 2, 3, 4



Polygon Adjustment



Mahogany Plantations



Overlay Analysis

20	20	30	30	40	40
20	20	30	30	40	40
20	20	30	40	40	40
20	20	20	40	40	40

2006

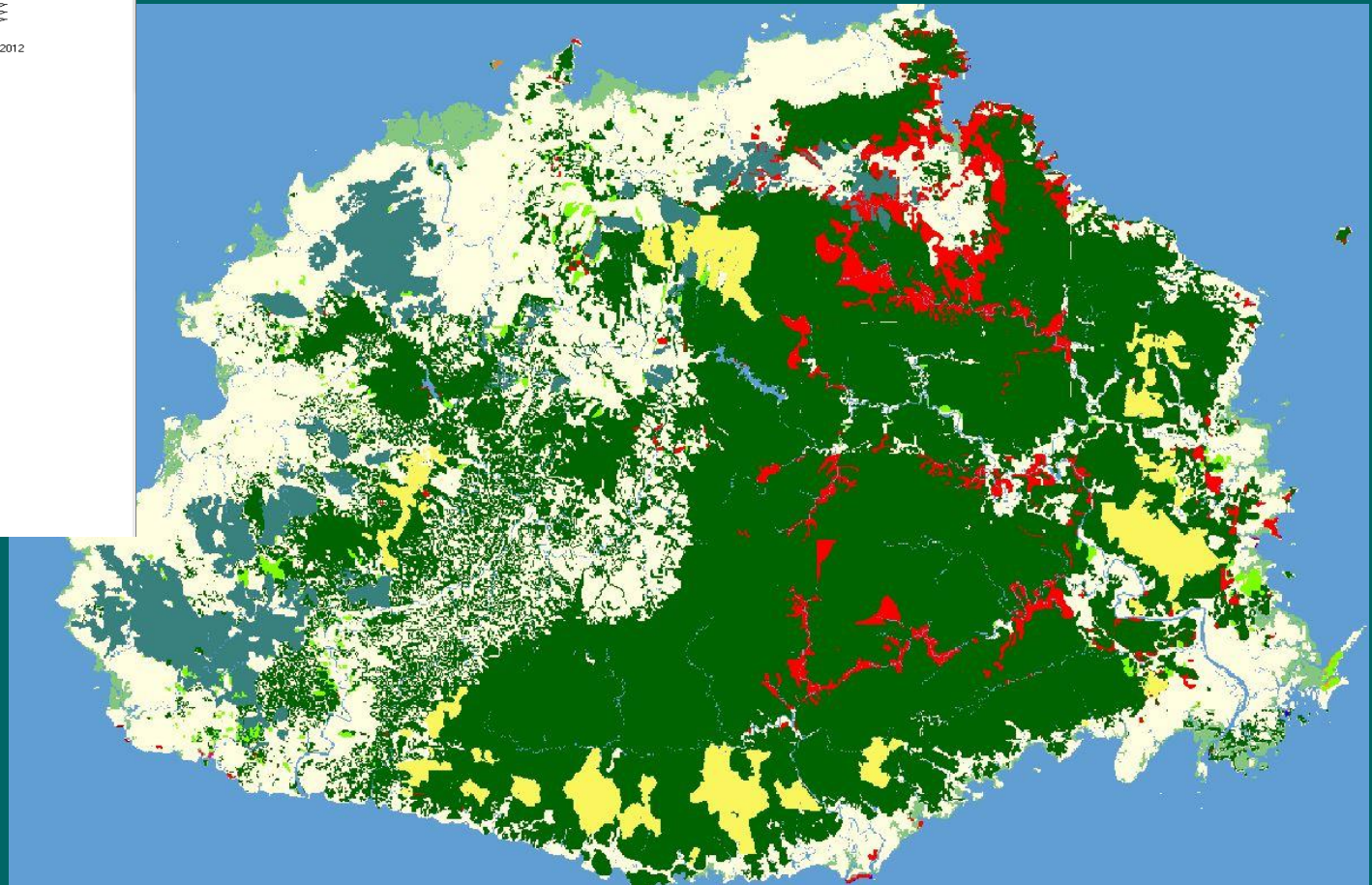
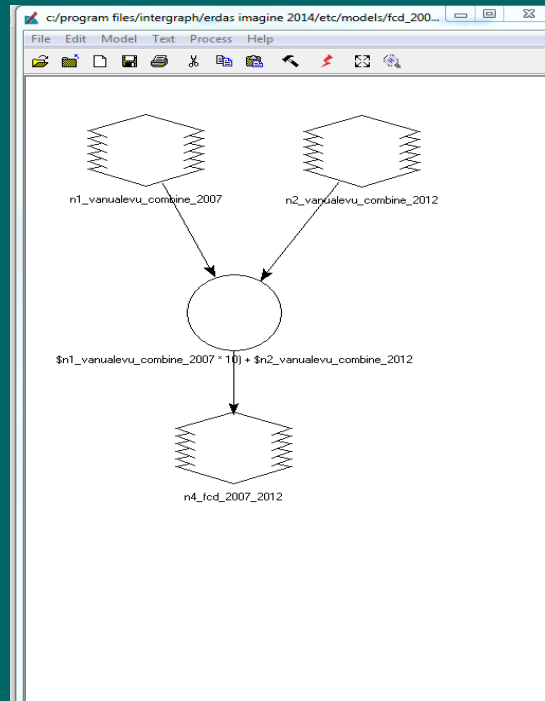
7	7	3	3	6	6
7	7	3	3	6	6
7	7	3	4	4	6
7	7	7	4	4	6

2016

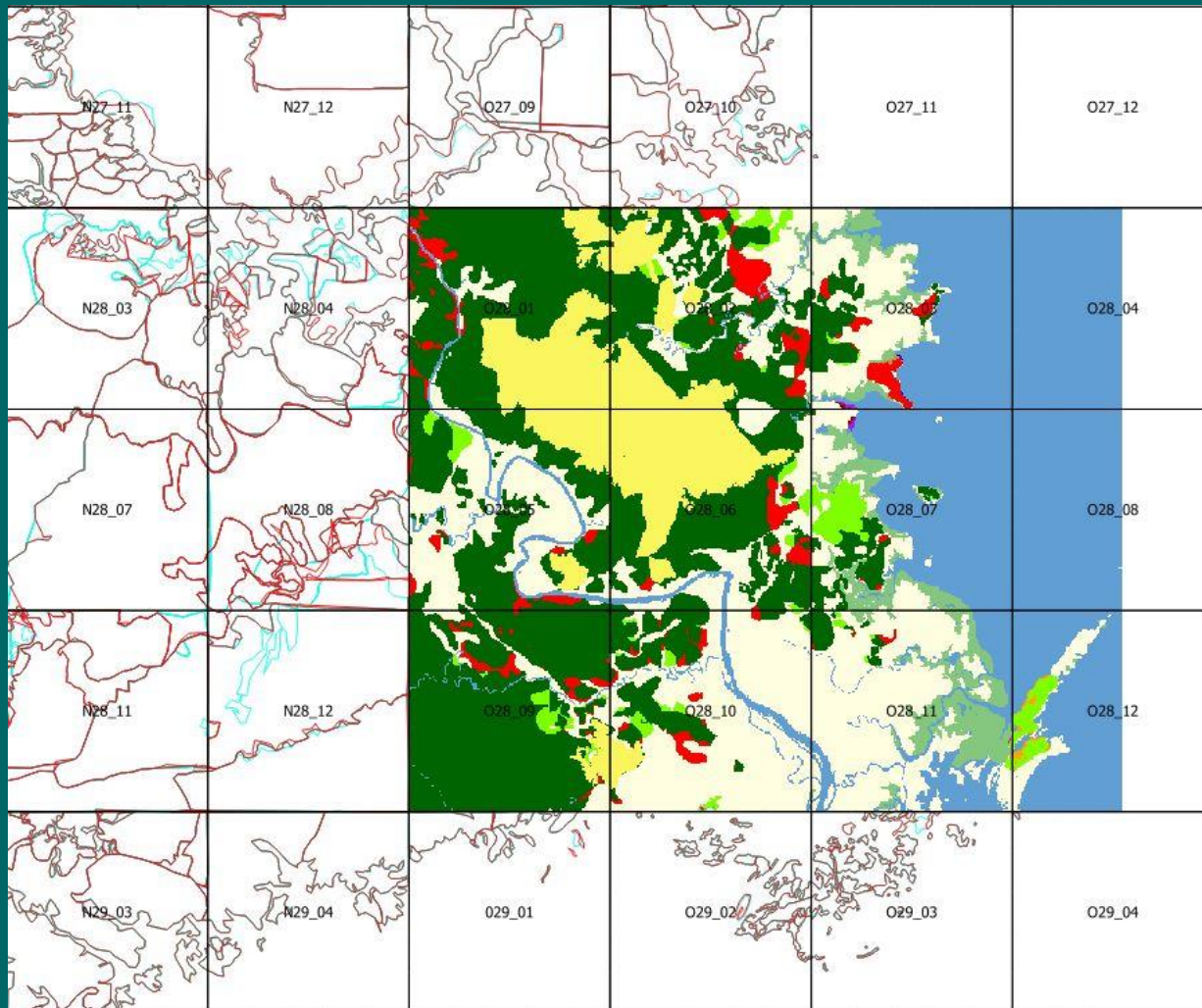
27	27	33	33	46	46
27	27	33	33	46	46
27	27	33	44	44	46
27	27	27	44	44	46

Output

Overlay Analysis in ERDAS Spatial Modeler



Cutting map sheets files



Classes:

Available as Output

1. Natural Forest
2. Mangrove
3. Hardwood Plantation
4. Pine Plantation
5. (Coconut Plantation)
6. None Forest
7. Water

Used

1. Forest
2. Plantation
3. None Forest
4. Water

Area Analysis

CHDE_Vanualevu_2007_2012					
ID	ClassName	NoPixels	Hectares	Click to Add	
11	Forest 2007 and Forest 2012	5597382	349836		
12	Forest 2007 and Mangrove 2012	11628	727		
15	Forest 2007 and Coconut 2012	22708	1419		
17	Forest 2007 and Non-Forest 2012	287680	17980		
21	Mangrove 2007 and Forest 2012	1436	90		
22	Mangrove 2007 and Mangrove 2012	420949	26309		
25	Mangrove 2007 and Coconut 2012	42	3		
27	Mangrove 2007 and Non-Forest 2012	880	55		
33	Pine 2007 and Pine 2012	356428	22277		
44	Mahogany 2007 and Mahogany 2012	215025	13439		
51	Coconut 2007 and Forest 2012	6470	404		
52	Coconut 2007 and Mangrove 2012	1216	76		
55	Coconut 2007 and Coconut 2012	153802	9613		
66	Water Body 2007 and Water Body 2012	78422	4901		
71	Non forest and Forest 2012	139683	8730		
72	Non forest 2007 and Mangrove 2012	4220	264		
77	Non-Forest 2007 and Non-Forest 2012	23575773	1473486		
*			0		

Accuracy Assessment

- **Interpretation of same area by different interpreter**
- **Data check with random check points**
- **Follow comments after web display**
- **Field verification of critical areas**
- **Accuracy assessment through different consultant company**

Thanks

